

TOURMALINE AITKEN CREEK NORTH C-038-C/094-H-04 001(Gas Plant Expansion) Project Notification

Checklist

- ✓ Initial contact with EAO sector team (optional)
- ✓ Project Notification Information
- ✓ Required maps
- ✓ Required shapefiles

Proponent Information

Organization Name

Tourmaline Oil Corp.

Mailing Address

Country

2900 – 250 6 th Avenue SW	Canada
--------------------------------------	--------

City

Province/Territory/State

Postal/Zip Code

Calgary	Alberta	T2P 3H7
---------	---------	---------

Organization Email

Organization Phone

info@Tourmalineoil.com	403-266-5992
------------------------	--------------

Organization Website

https://www.Tourmalineoil.com/

Contact Information

Primary Contact Name

Primary Contact Role /Department

Cory Lundquist	Manager of NEBC Permitting and Regulatory
----------------	---

Contact Phone Number

Contact Email

(403) 515-3340	cory.lundquist@tourmalineoil.com
----------------	----------------------------------

Alternative Contact Name

Alternative Contact Role /Department

Neal Gartner	Senior Facilities Engineer
--------------	----------------------------

Contact Phone Number

Contact Email

(403) 415-4933	neal.gartner@tourmalineoil.com
----------------	--------------------------------

1.0 Summary of Project Information

Project Name	TOURMALINE AITKEN CREEK NORTH C-038-C/094-H-04 001 (Gas Plant Expansion)		
Location Description	The Gas Plant is ~ 33.0 km NNW of the town of Wonowon.		
Project Nature	Modification (GHG only)	Region	Peace
Project Type	Energy - Petroleum & Natural Gas	Latitude	57.029601
Project Sub-Type	Natural Gas Processing Plant	Longitude	-121.849028

2.0 Trigger for Notification

- ✓ **Section 5(3):** An existing project, as modified, that emits 125,000 tonnes per year or more of one or more greenhouse gases directly from project facilities determined in accordance with [Part 3 of the Greenhouse Gas Emission Reporting Regulation](#). An existing project, as modified, that meets the criterion set out in subsection (3) and for which a Project Notification has previously been submitted under that subsection is not prescribed for the purposes of Section 10 (1) of the Act.

3.0 Detailed Project Information

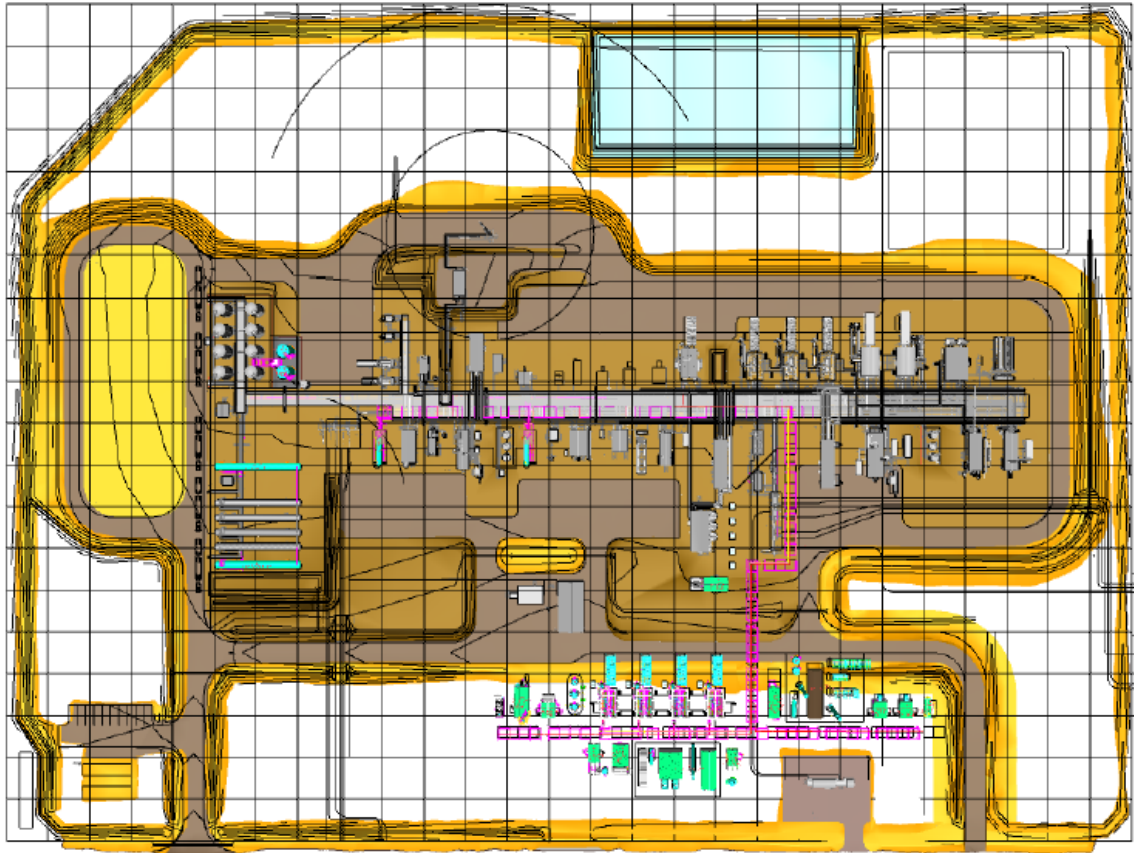
3.1 Location description

The existing Tourmaline Oil Corp. (Tourmaline) North Aiken Gas Plant is located in Quadrant C, Unit 38, Block C, Group 94-H-4, located on Treaty 8 land. The facility is approximately 33 km NNW of Wonowon, B.C., and approximately 40 km East of the town of Pink Mountain, B.C.

3.2 Project facilities

Currently, the site is operating as a gas plant. The proposed expansion of the existing gas plant would facilitate the processing of additional gas. There will be no additional land required for the proposed expansion as all of the additions will be sited on the existing facility lease, with no increase in the physical land footprint.

Current and Proposed Equipment – Facility Plot Plan



The new Phase 3 expansion equipment are highlighted in both green and blue above. The below is the list of proposed new equipment:

- Inlet Pig Receivers (RTP-1005/1010-3)
- Two (2) sour horizontal 3-phase inlet separators (BU-1200/1300-3)
- Four (4) 5,500 horsepower sour inlet/sales gas compressors (BU-2000/2100/2200/2300-3)
- Four (4) waste heat recovery units (E-2075/2175/2275/2375-3)
- Amine sweetening package (BU-3000-3)
- Demineralized water make-up tank (TK-3200-3)
- Pure amine make-up tank (TK-3300-3)
- Refrigeration inlet coalescing filter (BU-3100-3)
- Refrigeration package (BU-3400-3)
- Two (2) acid gas compressors (BU-7400/7500-3)
- Acid gas dehydration package (BU-7600-3)
- Condensate stabilizer (BU-5000-3)
- Overhead recycle gas compressor (BU-2600-3)
- Vapor recovery compressor (BU-2800-3)
- Heat medium package (BU-6000-3)
- Hot oil pop tank (TK-6010-3)
- Fuel gas separator package (BU-6800-3).
- Sales gas lube oil coalescing filter (BU-3150-3)
- Two (2) condensate storage tanks (TK-9100/9110-3)
- Two (2) LPG storage bullets (V-9400/9410-3)
- Sales condensate shipping pump package (BU-9300-3)
- Two (2) reciprocating engine electrical power generation packages (G-6200/6300-3)
- Two (2) gas turbine electrical power generators.
- MCC building with instrument air compression.

3.3 Proposed activities

Currently, the gas plant is licenced to process an inlet capacity of 3,398 e3m3/d of sour gas. Tourmaline is proposing to construct the Phase 3 expansion at the existing gas processing facility. The Phase 3 expansion inlet design capacity will be an addition of 4,240 e3m3/d of sour natural gas. The compressed gas, hydrocarbon liquids, and water will be transported via the existing pipelines to downstream facilities.

3.4 Associated projects

There are no additional associated projects that are required to support the proposed expansion. All additional infrastructure will be sited on the existing facility lease.

3.5 Work completed

Front End Engineering Design has been initiated on the proposed Train 3 expansion of the gas processing facility.

3.6 Duration of project

Stage of Development	Start Date	Completion Date
Construction Start Date for Train 3	March 1, 2026	November 1, 2026
Operation of Train 3	2027	Until Decommissioning
Decommissioning and Closure Work	~ 2050	~ 2050

3.7 Green House Gas (GHG) Emission Reduction Impacts

The British Columbia (BC) Climate Change Accountability Act states that the targets for reducing GHG emissions in BC relative to 2007 baseline are 40% by 2030, 60% by 2040, and 80% by 2050. Tourmaline is a member of the Montney East Transmission Line Consortium that is actively working towards several electrification projects in North-Eastern BC, where the impact to the area could be a reduction in GHG emissions.

In the short term, the proposed expansion of the facility will increase the GHG emissions from the site, however, this increase has been minimized as much as practicable. The compressors chosen for the expansion are equipped to be traded out for electric motors once more power is available to the area. The intent is to electrify most, if not all, of the site by 2030.

Heat recovery units (HRUs) have been integrated into the facility design to capture and use waste heat. This reduces the need to burn additional fuel for heating, resulting in a decrease in GHG emissions. When the proposed project (phase 3) is complete, the entire heat-medium system will be heated by waste heat. The decrease in CO2 emissions as a result of using heat recovery units, rather than heat medium heater(s) is ~ 20,325 metric tonnes/year of CO2.

Once there is sufficient, reliable electrical line power available for the site the majority of the equipment will be electric (~2030), and the site will be in alignment with BC's commitment to the reduction of GHG emissions for 2030, 2040, and 2050.

4.0 Engagement

Tourmaline is committed to respectful and meaningful engagement with Indigenous Nations in support of its ongoing operations and proposed developments. In accordance with BCER requirements, companies must undertake Pre-Application Engagement prior to submitting regulatory applications. Tourmaline has engaged with multiple First Nations communities, as directed by the BCER. This includes Halfway River First Nations, West Moberly First Nation and Blueberry River First Nations, including the trapline holder for the designated project area.

Feedback received during the pre-engagement process was generally positive. The decision to keep the proposed facility amendment within the existing permitted area of the C-38-C/94-H-4 facility was well received. As the application does not involve any new land disturbance, there was overall support for the development proposal. There are no outstanding issues related to First Nations engagement.

Tourmaline also fulfilled the consultation and notification requirements for stakeholder engagement, as outlined in BCER regulations. No comments or concerns were received during the 45-day notification and consultation period, which is now complete.

Blueberry River First Nations (BRFN):

A Pre-Application Engagement meeting was held on February 28, 2025, with representatives from BRFN, PGL, and Ratcliff to review and discuss several development projects, including the C-38-C/94-H-4 Gas Plant Expansion. During the meeting, Tourmaline presented project details and reviewed the plant site survey plans. BRFN did not raise any concerns regarding the project but requested that Tourmaline provide the trapper pre-engagement records once available. On April 10, 2025, Tourmaline met with the trapline holder to discuss the Gas Plant Expansion project. No concerns were raised during the meeting. Tourmaline subsequently provided the trapline pre-engagement records to BRFN, who confirmed that Tourmaline could proceed with submitting the application.

Halfway River First Nations (HRFN):

A Pre-Application Engagement meeting was held on January 31, 2025, with a representative from HRFN Lands to review and discuss several development projects, including the C-38-C/94-H-4 Gas Plant Expansion. During the meeting, Tourmaline presented project details and reviewed the plant site survey plans. A follow-up meeting took place on February 13, 2025. At that time, HRFN requested additional information regarding Tourmaline's plans for managing emissions and air quality monitoring. Tourmaline provided the requested information. HRFN advised they would rely on the BCER to determine whether the proposed air quality monitoring was sufficient and confirmed that Tourmaline could proceed with submitting its application.

West Moberly First Nations (WMFN):

On January 24, 2025, Tourmaline provided WMFN with project details for the C-38-C/94-H-4 Gas Plant Expansion, including KMZ files, the survey plan, and a route map, via email. A follow-up email was sent on March 3, 2025, to inquire whether WMFN had any questions or concerns regarding the project. No response was received.

5.0 Authorizations

Permits, licenses, tenures or other authorizations	Issuer	Status
BCER Permit Facility ID 00018237	BCER	To be amended to include proposed expansion
Air Waste Discharge Permit PA-108122	BCER	To be amended to include proposed expansion

6.0 Notification Threshold Information

Design Thresholds (Section 5(1)(b))	
Information Requirement	Proponent's Response
Notification Category	Natural Gas Processing Plant
Project's Design Value, in the applicable unit of measurement related to the design threshold that triggered notification.	<p>The current licenced sour gas inlet is 3,398 e3m3/d, with the proposed expansion the licenced sour gas inlet will be increased by 4,240 e3m3/d. The total licenced sour gas inlet rate is proposed to be ~ 7,638 e3m3/d.</p> <p>The gas plant is currently licenced to emit less than ~99,000 metric tonnes/year of CO2. The proposed expansion will increase this value to ~234,000 metric tonnes/year. The incremental increase of the proposed expansion is ~134,000 metric tonnes/year.*</p>

*Western Climate Initiative (WCI) quantification methodology used.

Workforce (Section 5(1)(c))	
Information Requirement	Proponent's Response
Number of employees or contractors who would work more than 30 hours/week on an annual basis during peak construction or operation.	100 full time workers during construction. 7 full time (equivalent) workers during normal operations.
Description of: Where the workforce will be drawn from; Where the workforce accommodations would be located and proximity to nearest communities; and The form of accommodations proposed to house the workforce.	The workforce will be from the Fort St. John area. On shift workers will be housed in an existing Tourmaline Work Camp located near the facility.

Greenhouse Gases (Section 5(1)(d) OR section 5(3))	
Information Requirement	Proponent's Response
Estimated total amount of GHG emissions determined in accordance with Part 3 of the <i>Greenhouse Gas Emission Reporting Regulation</i> (tonnes per year measured in carbon dioxide equivalents). For modifications for an existing project, include the estimated incremental change from the modification in addition to the total.	<p>The gas plant is currently licenced to emit less than ~99,000 metric tonnes/year of CO₂. The proposed expansion will increase this value to ~234,000 metric tonnes/year.</p> <p>The incremental increase of the proposed expansion is ~134,000 metric tonnes.</p>
Brief description of the primary source(s) of GHG emissions.	<p>The existing gas plant's primary sources for GHG emissions are as follows;</p> <p>5 inlet compressors, 2 propane compressors, 1 sales compressor, 3 power generators, an acid gas dehy regenerator, a heat medium heater, a utility heat medium and a High Pressure/Low Pressure Flare system.</p> <p>The proposed Phase 3 expansion to the gas plant consists of the following equipment that will be additional sources of GHG emissions from the gas plant;</p> <p>4 inlet compressors, 1 overhead recycle compressor 2 propane compressors, 2 power generators, and 1 Hot Oil Medium Heater.</p>

7.0 Attachments

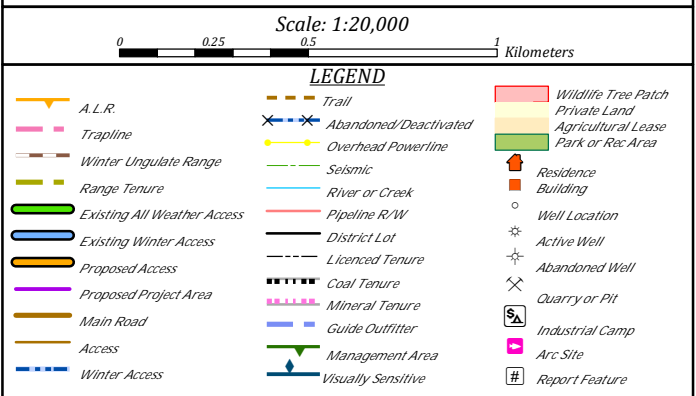
- Consultation/Notification (BCGS) Map for Plant Site at C-038-C/094-H-04
- Route Map (from Fort St. John to Plant Site)

8.0 Summary/Conclusion

The Tourmaline Aitken Creek North Gas Plant Expansion has been designed in an environmentally responsible manner, based on current equipment and technology. All new infrastructure will be located within the existing facility fence line with no additional land required. Tourmaline will continue to engage with First Nations regarding the proposed expansion. Please note that as stated above, there are no unresolved issues pertaining to the proposed expansion that have been brought forth by any First Nation to date.

Consultation/Notification (BCGS) Map
Plantsite c-38-C, 94-H-4
WITHIN UNITS 38 AND 39 BLOCK C, GROUP 94-H-4

TOURMALINE OIL CORP.



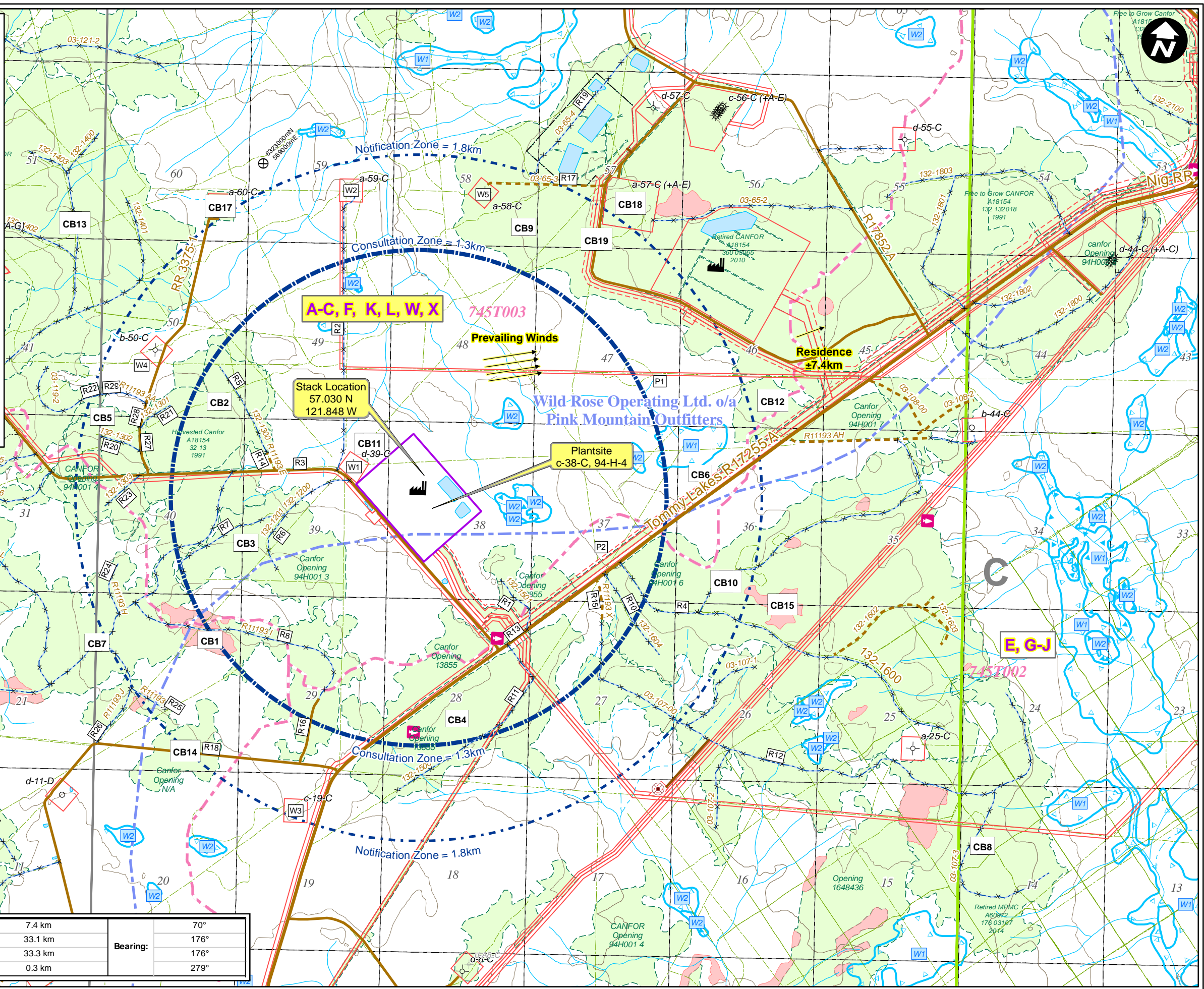
Location: c-38-C, 94-H-4 Datum: UTM NAD 83 Z10 District: Peace River
Revision: 3 Date: Jun 02, 2025 BCGS: 94H.001
ESRI File: 1407534AIR_R3.mxd Drawn By: JAF Field: Nig Creek West

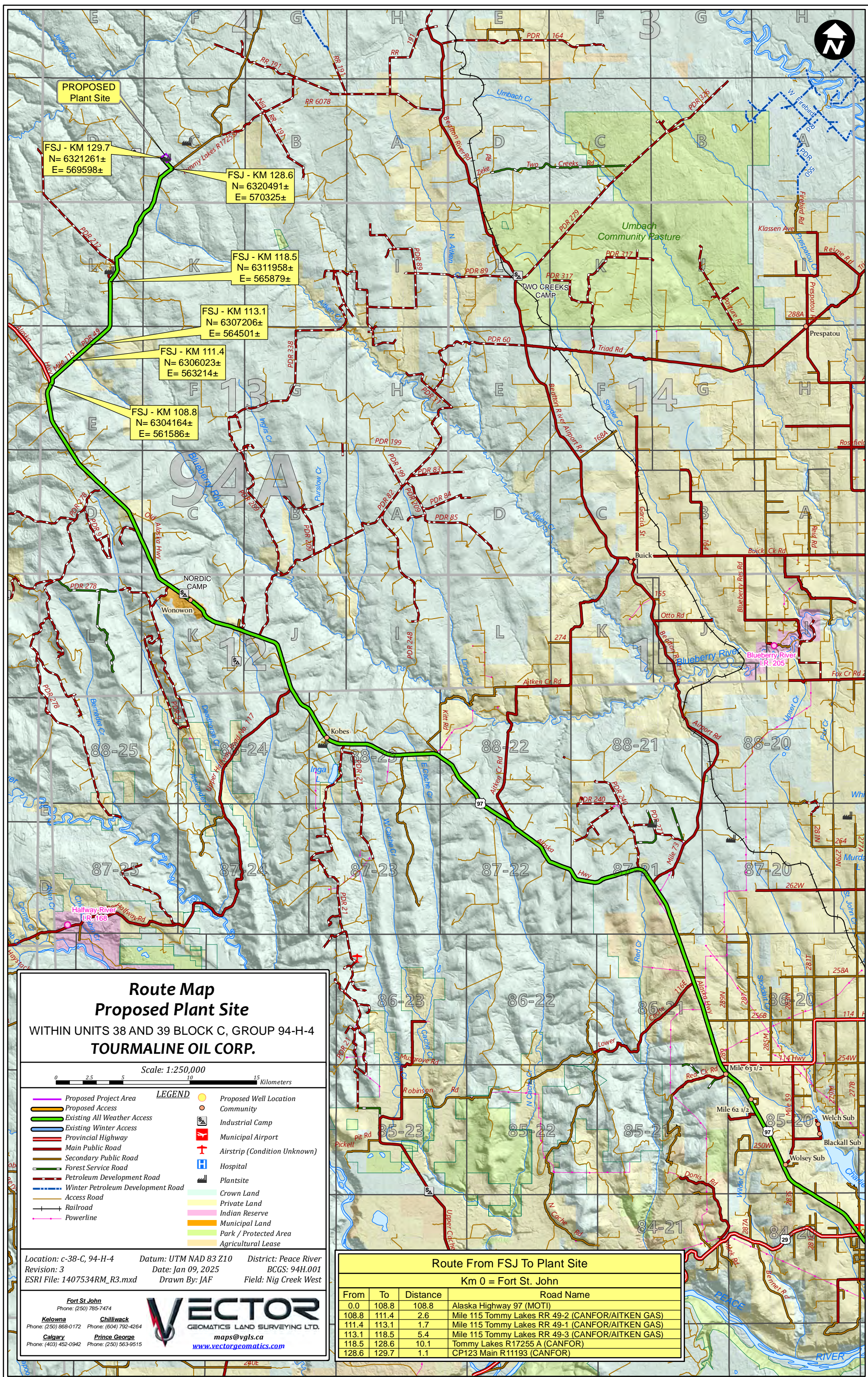
VECTOR
GEOMATICS LAND SURVEYING LTD.
maps@vpls.ca
www.vectorgeomatics.com


Fort St John
Phone: (250) 785-7474

Kelowna Chilliwack
Phone: (250) 868-0172 Phone: (604) 792-4264


Calgary Prince George
Phone: (403) 452-0942 Phone: (250) 563-9515





Consultation & Notification Report For Proposed Plant Site								Page 1 of 2		
WITHIN UNITS 38 AND 39 BLOCK C, GROUP 94-H-4										
TOURMALINE OIL CORP.										
Location: c-38-C, 94-H-4 District: Peace River Drawn By: JAF File: 1407534AIR_R3.xlsx			Revision: 3 Date: May 26, 2025 BCGS: 94H.001 Field: Nig Creek West							
DISCLAIMER: The information contained in this report is provided as a professional service and is NOT to be submitted with an oil and gas application. Vector Geomatics is not responsible for any errors or omissions contained within this report.										
Features highlighted with this background color intersect the project area.										
Features highlighted with this background color require an additional mitigation/seismic report.										
Nearest Residence:		Residence		Distance:	7.4 km		Bearing:	70°		
Urban Center:		Wonowon			33.1 km			176°		
Nearest School:		Wonowon Elementary			33.3 km			176°		
Populated Area:		Tourmaline Plantsite c-38-C, 94-H-4			0.3 km			279°		
FIRST NATION PACKAGES										
STAKEHOLDER			CONTACT					DISTANCE		
Halfway River			Halfway River First Nation (250-772-5058)					57.8 km		
Doig River			Doig River First Nation (250-827-3776)					96.8 km		
Prophet River			Prophet River First Nation (250-773-6555)					128.8 km		
West Moberly			West Moberly First Nations (250-788-3663)					133.8 km		
Saulteau			Saulteau First Nations (250-788-3955)					131.6 km		
Blueberry River			Blueberry River First Nation (250-630-2800)					58.3 km		
AREAS OF CONSIDERATION										
TYPE		NAME/ID			STAKEHOLDER/CONTACT					
Major Watersheds		Beatton River			Ministry of Environment (250-387-1161)					
Timber Supply Area		Fort St John TSA Block C			FrontCounter BC Fort St. John (250-787-3415)					
Timber Supply Area		Fort St. John TSA			FrontCounter BC Fort St. John (250-787-3415)					
OGC Water Management Basin		Upper Beatton River (Normal)			BC Oil & Gas Commission (250-794-5200)					
OGC Water Management Basin		Blueberry River (Enhanced)			BC Oil & Gas Commission (250-794-5200)					
Management Unit		7-45			North Peace (250-787-3411)					
Official Community Plan		PRRD Rural OCP			PRRD Rural OCP (250-784-3200)					
Wildlife Habitat		Moose 0-40			BC Fish and Wildlife (250-387-0239)					
CONSULTATION RADIUS = 1.300km										
TENURE										
KEY	TYPE		STAKEHOLDER			CONTACT				
A	Land Resource Management Zone		Fort St John LRMZ			FrontCounter BC Fort St. John (250-787-3415)				
B	Guide Outfitter		Wild Rose Operating Ltd. o/a Pink Mountain Outfitters			<div></div>				
C	Trapper		745T003			<div></div>				
D	Trapper		745T004			<div></div>				
E	Trapper		745T002			<div></div>				
F	Land Resource Management Zone		Enhanced Resource Development			Fort St John Land & Resource Management Plan (250-787-3415)				
G	Trapper		745T002			<div></div>				
H	Trapper		745T002			<div></div>				
I	Trapper		745T002			<div></div>				
J	Trapper		745T002			<div></div>				
K	Trapper		745T003			<div></div>				
L	Trapper		745T003			<div></div>				
M	Trapper		745T004			<div></div>				
N	Trapper		745T004			<div></div>				
O	Trapper		745T004			<div></div>				
P	Trapper		745T004			<div></div>				
Q	Trapper		745T004			<div></div>				
R	Trapper		745T004			<div></div>				
S	Trapper		745T004			<div></div>				
T	Trapper		745T004			<div></div>				
U	Trapper		745T004			<div></div>				
V	Trapper		745T004			<div></div>				
W	Trapper		745T003			<div></div>				
X	Trapper		745T003			<div></div>				
WELLSITES & PIPELINE ROW										
KEY	PROPONENT		TYPE	START	END	OGC #	PROJ #	AD #	LTO #	STATUS
W1	CONOCOPHILLIPS CANADA OPERATIONS LTD.		LEASE	d-39-C, 94-H-4		9602226	1448	100001919		Abandoned
P1	SABA OIL & GAS LTD.		PIPE	a-59-C, 94-H-4	b-70-B, 94-H-4	8011981	7356	100021071		Abandoned
P2	ALTAGAS HOLDINGS INC.		PIPE	d-46-C, 94-H-4	a-34-L, 94-A-13	9000786	25455	100110076	EPP101320	Registered
ROADS										
KEY	PROPONENT			ROAD NAME			ROAD #	START	END	
R1	CANADIAN FOREST PRODUCTS LTD.			132-1501				d-28-C, 94-H-4	a-38-C, 94-H-4	
R2	ZARGON OIL & GAS LTD.							d-39-C, 94-H-4	a-59-C, 94-H-4	
R3	CANADIAN FOREST PRODUCTS LTD.			CP123 Main R11193			R11193 A	d-28-C, 94-H-4	a-57-D, 94-H-4	

R4	MINISTRY OF FORESTS	132-1600		a-37-C, 94-H-4	a-25-C, 94-H-4
R5	MINISTRY OF FORESTS	132-1300		c-39-C, 94-H-4	a-50-C, 94-H-4

Consultation & Notification Report For Proposed Plant Site										Page 2 of 2	
WITHIN UNITS 38 AND 39 BLOCK C, GROUP 94-H-4											
TOURMALINE OIL CORP.											
Location: c-38-C, 94-H-4 District: Peace River Drawn By: JAF File: 1407534AIR_R3.xlsx				Revision: 3 Date: May 26, 2025 BCGS: 94H.001 Field: Nig Creek West							
CONSULTATION RADIUS = 1.300km											
ROADS											
KEY	PROPONENT				ROAD NAME		ROAD #	START		END	
R6	MINISTRY OF FORESTS				132-1201			b-39-C, 94-H-4		b-39-C, 94-H-4	
R7	MINISTRY OF FORESTS				132-1200			d-39-C, 94-H-4		a-40-C, 94-H-4	
R8	CANADIAN FOREST PRODUCTS LTD.				R11193 I		Sec I	c-30-C, 94-H-4		b-29-C, 94-H-4	
R9	CANADIAN FOREST PRODUCTS LTD.				R11193 F		Sec F	d-40-C, 94-H-4		a-11-D, 94-H-4	
R10	MINISTRY OF FORESTS				132-1604			a-37-C, 94-H-4		d-27-C, 94-H-4	
R11	MINISTRY OF FORESTS				132-1500			d-28-C, 94-H-4		c-18-C, 94-H-4	
R12	TEMBEC INDUSTRIES INC.				03-107-00			c-27-C, 94-H-4		c-24-C, 94-H-4	
R13	CANADIAN FOREST PRODUCTS LTD.				Tommy Lakes R17255 A		R17255 Sec A	d-34-L, 94-A-13		c-52-D, 94-H-13	
R14	CANADIAN FOREST PRODUCTS LTD.				R11193 E			c-39-C, 94-H-4		c-39-C, 94-H-4	
R15	CANADIAN FOREST PRODUCTS LTD.				R11193 X			b-37-C, 94-H-4		c-27-C, 94-H-4	
R16	CANADIAN FOREST PRODUCTS LTD.				R11193 I		Sec I	c-30-C, 94-H-4		b-29-C, 94-H-4	
CUTBLOCKS											
KEY	FEATURE	BLOCK	CP	LICENSE	OPENING	MAJOR LICENSEE		STATUS		HARVEST YEAR	
CB1	WTP	3105	TEM	TEM	N/A	CANADIAN FOREST PRODUCTS LTD.		Active			
CB2	Cutblock	13	32	A18154	94H001 4	CANADIAN FOREST PRODUCTS LTD.		Harvested		1991	
CB3	Opening	12	132	A18153	94H001 3	CANADIAN FOREST PRODUCTS LTD.		Free to Grow		1990	
CB4	Opening	32015	32	A18154	13855	CANADIAN FOREST PRODUCTS LTD.		Free to Grow		1991	
CB5	Opening	13	32	A18154	94H001 4	CANADIAN FOREST PRODUCTS LTD.		Free to Grow		1991	
CB6	Cutblock	1	19	M02565	0	TOURMALINE OIL CORP.		Active			
CB7	Cutblock	3105	176	A60972	94H001 29	MACKENZIE PULP MILL CORPORATION		Retired		2014	
CB8	Cutblock	3107	176	A60972	1608236	MACKENZIE PULP MILL CORPORATION		Retired		2014	
CB9	Cutblock	3065	360	A18154	1389630	CANADIAN FOREST PRODUCTS LTD.		Retired		2010	
CB10	Opening	16	32	A18154	94H001 6	CANADIAN FOREST PRODUCTS LTD.		Harvested		1990	
CB11	Cutblock	1	MTD709	M02620		CONOCOPHILLIPS CANADA RESOURCES CORP.		Active		2023	
NOTIFICATION RADIUS = 1.800km											
WELLSITES & PIPELINE ROW											
KEY	PROPONENT			TYPE	START	END	OGC #	PROJ #	AD #	LTO #	STATUS
W2	SABA OIL & GAS LTD.			LEASE	a-59-C, 94-H-4		9601560	10216	100019672		Abandoned
W3	PREDATOR OIL BC LTD.			LEASE	c-19-C, 94-H-4		234057	92	100000124		Abandoned
W4	CONOCOPHILLIPS CANADA RESOURCES CORP.			LEASE	b-50-C, 94-H-4		344933	4035	100005729		Abandoned
W5	CONOCOPHILLIPS CANADA RESOURCES CORP.			LEASE	a-58-C, 94-H-4		8007633	8212	100014519		Abandoned
ROADS											
KEY	PROPONENT				ROAD NAME		ROAD #	START		END	
R17	CANADIAN FOREST PRODUCTS LTD.				03-65-3			c-56-C, 94-H-4		a-58-C, 94-H-5	
R18	CANADIAN FOREST PRODUCTS LTD.							d-11-D, 94-H-4		a-29-C, 94-H-4	
R19	CANADIAN FOREST PRODUCTS LTD.				03-65-4			b-57-C, 94-H-4		a-67-C, 94-H-5	
R20	MINISTRY OF FORESTS				132-1302			c-40-C, 94-H-4		c-40-C, 94-H-4	
R21	MINISTRY OF FORESTS				132-1301			c-40-C, 94-H-4		b-50-C, 94-H-4	
R22	CANADIAN FOREST PRODUCTS LTD.				03-119-2			b-50-C, 94-H-4		a-41-D, 94-H-4	
R23	MINISTRY OF FORESTS				132-1303			c-40-C, 94-H-4		c-40-C, 94-H-4	
R24	CANADIAN FOREST PRODUCTS LTD.				R11193 H		Sec H	c-30-C, 94-H-4		b-40-C, 94-H-4	
R25	CANADIAN FOREST PRODUCTS LTD.				R11193			b-30-C, 94-H-4		b-30-C, 94-H-4	
R26	CANADIAN FOREST PRODUCTS LTD.				R11193 J		Sec J	d-21-D, 94-H-4		b-30-C, 94-H-4	
R27	CANADIAN FOREST PRODUCTS LTD.				R11193 Y			c-40-C, 94-H-4		c-40-C, 94-H-4	
R28	CANADIAN FOREST PRODUCTS LTD.				R11193 Z			c-40-C, 94-H-4		b-50-C, 94-H-4	
R29	CANADIAN FOREST PRODUCTS LTD.				R11193 AA			b-50-C, 94-H-4		b-50-C, 94-H-4	
CUTBLOCKS											
KEY	FEATURE	BLOCK	CP	LICENSE	OPENING	MAJOR LICENSEE		STATUS		HARVEST YEAR	
CB12	Opening	17	32	A18154	94H001 7	CANADIAN FOREST PRODUCTS LTD.		Free to Grow		1990	
CB13	Cutblock	132014	132	A18153	13854	CANADIAN FOREST PRODUCTS LTD.		Harvested		1990	
CB14	Opening	132011	132	A18153	N/A	CANADIAN FOREST PRODUCTS LTD.		Free to Grow		1989	
CB15	WTP	16	32	A18154	94H001 6	CANADIAN FOREST PRODUCTS LTD.		Active			
CB16	Cutblock	3119	939	A59959	94H001 33	CAMERON RIVER LOGISTICS INC.		Retired		2015	
CB17	Opening	14442	N/A		N/A			Retired		2016	
CB18	Cutblock	1	MTC704	M02565		TOURMALINE OIL CORP.		Active		2020	
CB19	Cutblock	1	MTC283	M02301		TOURMALINE OIL CORP.		Active		2020	