

SAULTEAU FIRST NATIONS

APPENDIX 3

SAULTEAU FIRST NATIONS COMMUNITY BASELINE PROFILE REPORT

SITE C CLEAN ENERGY PROJECT

SAULTEAU FIRST NATIONS COMMUNITY BASELINE PROFILE

Prepared for:

**BC Hydro Power and Authority
333 Dunsmuir Street
Vancouver, BC
V6B 5R3**

**Saulteau First Nations
Box 1020
Chetwynd, BC
V0C 1J0
Tel: (250) 788-3955**

Prepared By:

**Randy Sunderman
Peak Solutions Consulting Inc.
Kamloops, BC
Tel: (250) 314-1842**

**Lions Gate Consulting Inc.
Vancouver, BC**

February 5, 2013

ABBREVIATIONS AND ACRONYMS

CTS	Culture and Traditions Study
EAC	Environmental Assessment Certificate
EIS	Environmental Impact Statement
EISG	Environmental Impact Statement Guidelines
GED	Graduated Equivalence Diploma
gpm	gallons per minute
IR	Indian Reserve
MFLNRO	Ministry of Forests, Lands and Natural Resource Operations
MOU	Memorandum of Understanding
NWMP	North West Mounted Police
OSB	Oriented Strand Board
PRRD	Peace River Regional District
PVC	polyvinyl chloride
RCMP	Royal Canadian Mounted Police
SFNs	Saulteau First Nations
UNBC	University of Northern British Columbia
WHMIS	Workplace Hazardous Materials Information System

DEFINITIONS

- **Beach foods** – foods harvested close to ocean shores and include foods such as clams, crab, prawns, shrimp, basket cockle, oysters, mussels, scallops, octopus, Sea prunes, China slippers, abalone, and geoduck clams.
- **Dogwood Diploma** – the standard Certificate of high school Graduation in BC. Secondary school graduation for most students in comes after completing 80 course credits.
- **School Leaving Certificate** – intended to recognize the accomplishments of students who have succeeded in meeting the goals of their educational program as outlined in their individual education plan but that have not achieved a Dogwood diploma. All students in receipt of a School Leaving Certificate can also receive a transcript of successfully completed Grades 10 to 12 courses that may be a mixture of credit and non-credit courses.

TABLE OF CONTENTS

List of Tables	e
List of Figures	f
1 Introduction	1
1.1 Community Baseline Profile Objectives	1
1.2 Methodology.....	1
1.2.1 Secondary Data Collection and Information Sources.....	1
1.2.2 Primary Data Collection	1
1.2.2.1 Community Survey	1
1.2.2.2 Interviews	2
1.2.2.3 Training Database Development.....	2
1.3 Report Structure	2
2 Background	4
2.1 Saulteau Territory.....	4
2.2 Governance.....	4
2.3 Land Use and Stewardship Principles	5
3 Community Overview	6
3.1 Community Location	6
3.2 Population	7
3.2.1 Total Population	7
3.2.2 Age Characteristics.....	7
3.3 Education	9
3.3.1 Secondary Educational Attainment	9
3.3.2 Post-Secondary Education	9
4 Interest area 1: Current traditional Use of Lands and Resources	11
4.1 Key Issues.....	11
4.2 Key Indicators	11
4.3 Traditional Purposes	12
4.3.1 Fishing	13
4.3.2 Hunting and Trapping	14
4.3.3 Local and Wild Plants	15
5 Interest area 2: Community Infrastructure and Services	18
5.1 Key Issues.....	18
5.2 Key Indicators	18
5.3 Housing	20
5.4 Health and Social Services	21

5.4.1	Saulteau Community Health and Wellness Services	21
5.4.1.1	Current Situation	21
5.4.1.2	Future Outlook.....	23
5.4.2	Regional Medical Services	23
5.5	Childcare, Education and Training Services	24
5.5.1	Muskoti Learning Centre.....	24
5.5.1.1	Current Situation	24
5.5.1.2	Future Outlook.....	28
5.6	Emergency Services	28
5.6.1	Police Services	28
5.6.1.1	Current Situation	28
5.6.1.1	Future Outlook.....	29
5.6.2	Fire Services.....	29
5.6.2.1	Current Situation	29
5.6.2.1	Future Outlook.....	31
5.6.3	Ambulance Services	31
5.6.3.1	Current Situation	31
5.6.3.2	Future Outlook.....	32
5.7	On-reserve Services and Infrastructure	32
5.7.1	Local Administrative and Recreation Facilities	32
5.7.1.1	Current Situation	32
5.7.2	Sewer, Water and Solid Waste Services and Infrastructure	33
5.7.2.1	Current Situation	33
5.7.3	Electrical and Telecommunication Infrastructure.....	34
5.7.3.1	Current Situation	34
5.7.3.2	Future Outlook.....	34
5.8	Transportation	34
5.8.1	Road Infrastructure and Transportation Services.....	34
5.8.1.1	Current Situation	34
5.8.1.2	Future Outlook.....	35
6	Interest area 3: Economic activities.....	36
6.1	Key Issues.....	36
6.2	Key Indicators	36
6.3	Baseline Conditions	37
6.3.1	Labor Force and Incomes.....	37
6.3.1.1	Labour Force Characteristics	37
6.3.1.2	Personal Income Characteristics	40

6.3.2	Business Development	41
6.3.2.1	Band Own Businesses	41
6.3.2.2	Joint Ventures and Partnerships	42
6.3.2.3	Saulteau First Nations Independent Contractors	43
7	Interest area 4: Community Health	45
7.1	Key Issues	45
7.2	Key Indicators	45
7.3	Cultural Vitality	46
7.3.1	Culture	46
7.4	Health Conditions	47
A	References	49
A-1	Literature Cited	49
A-2	Internet Sites	51
A-3	Contacts	52

List of Tables

Table 3-1:	Saulteau First Nations Population, 2000 to 2012	7
Table 4-1:	Key Indicators for Current Traditional Proposes	12
Table 4-2:	Saulteau FNs survey participant responses to issues concerning Site C Project interaction with their traditional uses, 2012	13
Table 4-3:	Key Fish Species consumed by Saulteau FNs survey participants, 2009	13
Table 4-4:	Saulteau FNs survey participants who consumed fish from the Peace, Moberly, Halfway river systems, 2012	14
Table 4-5:	Key Land Mammals consumed by Saulteau FN survey participants, 2009	14
Table 4-6:	Saulteau FNs survey participants who consumed animals harvested from Peace, River Area, 2012	15
Table 4-7:	Key Wild Berries consumed by Saulteau FN survey participants, 2009	16
Table 4-8:	Key Plant Roots, Shoots and Greens consumed by Saulteau FNs survey participants, 2009	16
Table 4-9:	Saulteau FNs survey participants who consumed plants harvested from the Peace River Area, 2012	17
Table 5-1:	Key Indicators for Community Infrastructure and Services	19
Table 5-2:	Dwelling Counts for Saulteau FNs on-reserve and PRRD, 2011	20
Table 5-3:	Saulteau FNs survey participant responses to Housing Questions, 2012	21
Table 5-4:	Services and sub-organizations of Tansi Friendship Centre Society	23
Table 5-5:	Number of SFNs Members By Completed Program, 2001 to 2011	25

Table 5-6:	Number of SFNs Members By Course, Training and Program, 2001 to 2011	27
Table 5-8:	Moberly Lake 911 Fire Calls and Share of Dawson Creek Fire Dispatch (2004 to 2011).....	31
Table 5-9:	Saulteau FN survey participant responses to Transportation Questions, 2012	35
Table 6-1:	Key Indicators for Economic Activities.....	36
Table 6-2:	Saulteau FN survey participant responses to Employment Questions, 2012	37
Table 6-3:	Business, industry or service employed in, 2012	38
Table 6-4:	Major Employers.....	39
Table 6-5:	Travel distance and time to work, 2012.....	39
Table 6-6:	Saulteau FNs survey participant responses to Total Earned Income , 2011	40
Table 6-7:	Saulteau FNs survey participant responses to Source of Income , 2011.....	41
Table 7-1:	Key Indicators for Cultural Vitality and Health Conditions	46
Table 7-2:	Saulteau FNs survey participants Access to Health Professionals, 2012	47
Table 7-3:	Saulteau FNs survey participants Interest in Access Other Health Services, 2012	48

List of Figures

Figure 3-1:	Saulteau First Nations Community and Area	6
Figure 3-2:	East Moberly Lake IR 169 and British Columbia Age Characteristics, 2011	8
Figure 3-3:	Total Saulteau First Nations and PRRD Age Characteristics, 2012.....	9
Figure 5-1:	Moberly Lake Fire Protection Area	30

1 INTRODUCTION

1.1 Community Baseline Profile Objectives

This report is a profile of the Saulteau First Nations (SFNs) community and includes information for on-reserve (East Moberly Lake IR 169) and off-reserve populations.

1.2 Methodology

1.2.1 Secondary Data Collection and Information Sources

Some baseline data was obtained from the provincial and federal governments, statistical agencies such as BC Stats and Statistics Canada, the Treaty 8 Tribal Association and indirectly from other studies. Baseline data from these sources is either incomplete or dated and only partially characterizes the population, demographic, economic or social status and trends of SFNs.

A 2011 study of food, nutrition and health trends among BC First Nations, included a survey of 93 SFNs members (UNBC 2011). While the study provided valuable insights, findings are not representative of the entire community.

1.2.2 Primary Data Collection

Most baseline data in this report was obtained through a primary data collection process, the methods for which are outlined below.

1.2.2.1 Community Survey

A community survey was conducted by the SFNs between June and September 2012. On and off-reserve respondents were included. The survey collected information on the following topics including:

- Education
- Labour market
- Training
- Community health
- Land use activities and concerns
- Fish consumption from the Site C Project area
- Housing characteristics

- Personal income

Responses were received from 184 households, representing 454 residents. The survey response group represented approximately 50% of total band population with most responses coming from the on-reserve population. Information on 80% of on-reserve population was collected during the survey.

1.2.2.2 Interviews

In order to gain information about services and administrative affairs, key informants interviews were conducted with the following:

- Members of the Saulteau Steering Committee were individually interviewed in May 2012.
- Band administration staff that provide services to the community were contacted in August and September 2012.
- Service providers (i.e., firefighting, ambulance, policing) were interviewed in August and September 2012.
- SFN business interests and independent businesses owned by SFNs members were interviewed in September and November 2012.

1.2.2.3 Training Database Development

The Muskoti Learning Centre has provided training to SFNs members and maintains hard copy files on each individual trained. These records could not be aggregated quickly for this report, but summaries are presented.

1.3 Report Structure

The report is organized into the following chapters:

- **Chapter 2** presents background information on SFNs in the form of territory, government and land use principles.
- **Chapter 3** provides an overview of community demographics including location, population, age characteristics and education attainment of SFNs members.
- **Chapter 4** is interest area 1: Current Traditional Use of Lands and Resources. It discusses land use practices, dependence on traditional foods, and regional development activities.
- **Chapter 5** is interest area 2: Community Infrastructure and Services. It discusses the local services and infrastructure and includes local infrastructure,

health and social services, emergency services and education facilities, and transportation infrastructure.

- **Chapter 6** is interest area 3: Economic Activities section.
- **Chapter 7** is interest area 4: Community Health. It presents the community health and looks at cultural vitality and specific health conditions.

2 BACKGROUND

2.1 Saulneau Territory

The Sauleau First Nations (SFNs) traditional territory is within Treaty 8 and includes northeastern BC, parts of Alberta, Saskatchewan and the Northwest Territories and covers a wide range of ecosystems, terrain features, and resources (Aboriginal Affairs and Northern Development Canada. 2013). Treaty 8 was first negotiated in 1899 with Cree, Chipewyan, and Beaver Indians at Lesser Slave Lake, with subsequent adhesions between 1900 and 1914. In 1915, when the first official census was taken, the SFNs numbered 34 people, although this number may have not captured all the residents of the area at that time. Signatory bands were to receive reserves with areas equal to 258 hectares (640 acres) for each family of five (i.e., 51 hectares per capita). Treaty 8 included provisions for education, farm stock and implements, ammunition, twine and clothing. Treaty 8 also guaranteed fishing, hunting, and trapping rights.

2.2 Governance

The SFNs is a band, within the meaning of the Indian Act. In 1988, the SFNs passed a band bylaw pursuant to s. 2(3) (a) of the Indian Act, which recognizes the inherent power of a band to establish custom election procedures. Therefore, the SFNs has a system of custom elections codified into the SFNs elections system containing methods for each of the five founding families to nominate and elect a “headman” (who could be male or female) to serve as a band councillor. The entire band then votes to elect one of the headmen as chief. Elections are held every three years (Napoleon 2005).

Currently, the SFNs leadership includes: Chief Harley Davis and Councillors Patricia Blandin, Teena Demeulemeester, Lana Garbitt, and Tammy Watson. The Chief and Council have initiated a governance committee to discuss traditional governance structures with community members (SFNs 2012a).

As noted earlier, in 1914, the SFNs were admitted to treaty and are members of the Treaty 8 Tribal Association (Madill 1986). Therefore, the SFNs hold Treaty 8 Rights which are recognized and affirmed under Section 35 of the Constitution Act. These Treaty rights include fishing, hunting, and trapping rights within their traditional territories. In addition, the Treaty rights include the use of the land for gathering, ceremonial and spiritual purposes and to carry on their mode of life.

2.3 Land Use and Stewardship Principles

The role of SFNs' Land and Resources Department is to work with Government, industry, and scientists to plan and co-manage Saulteau First Nations' land and resources. They also collaborate with Treaty 8 Tribal Association and Treaty 8 communities on all Treaty 8 territorial planning and management. The department engages in numerous, intercommunication, research, technical and negotiation activities primarily focused on forestry, mining, oil and gas, and renewable energy industries (including hydroelectric and wind energy development). They also work with government, industry and other First Nation people to develop SFNs land (SFNs 2012f).

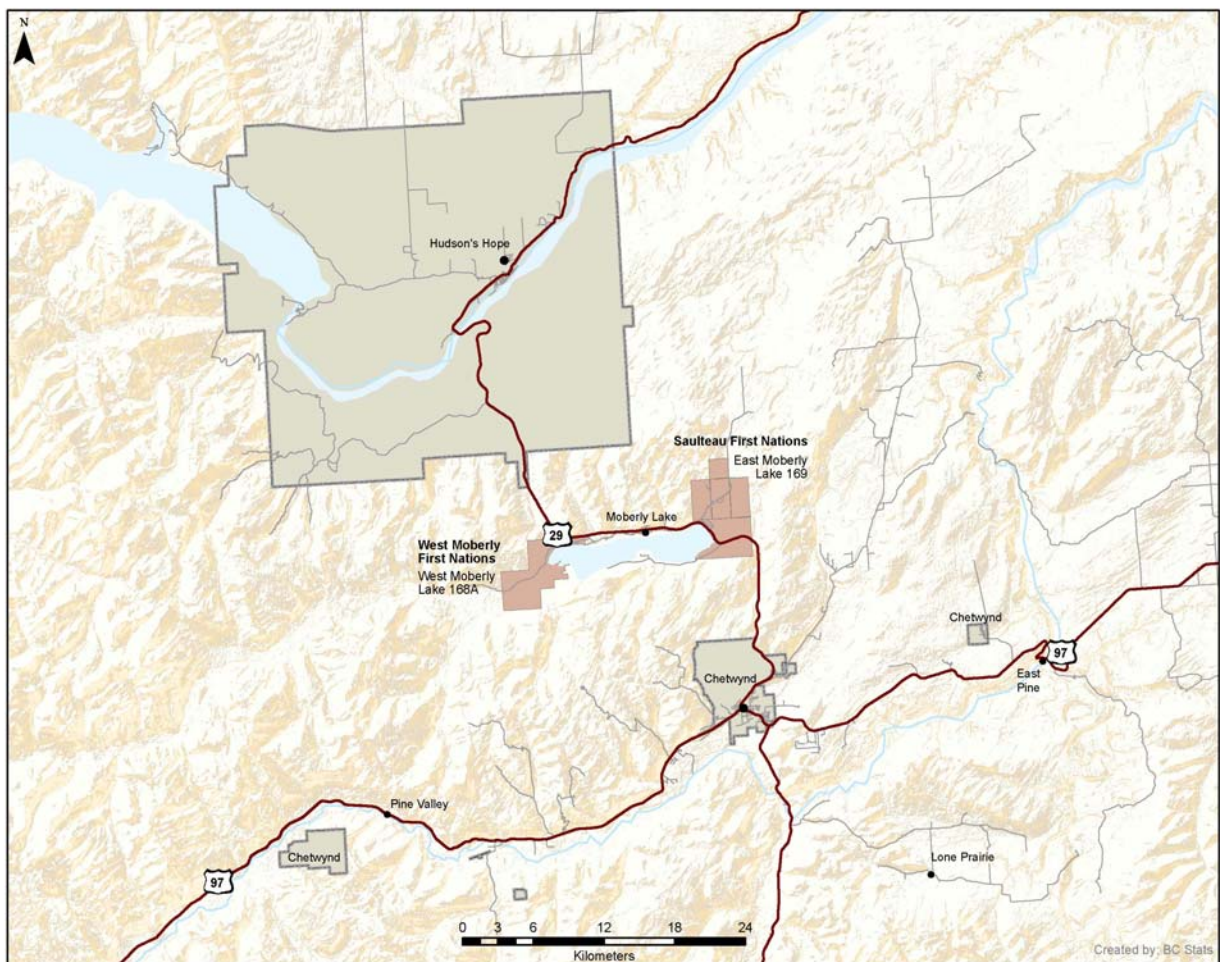
The services of the SFNs' Land Resource Department includes working on behalf of Saulteau members, under the direction of Chief and Council, to assess potential impacts from resource development projects and identify avoidance, mitigation, and negative avoidance measures that should be considered for proponent implementation (Publicover 2013, pers. comm.).

3 COMMUNITY OVERVIEW

3.1 Community Location

In 1918, East Moberly Lake Reserve No. 169 was established for Saulteau First Nations (SFNs). East Moberly Lake No. 169 is located on the east side of Moberly Lake (Figure 3-1).

Figure 3-1: Saulteau First Nations Community and Area



SOURCE: BC STATS (2012)

The reserve is 3025.8 hectares and located approximately 28 km northwest of Chetwynd, BC, and about 125 km southwest of Fort St. John on Highway #29. Highway

29 provides access from Chetwynd to Hudson’s Hope and on to Fort St. John (Statistics Canada, 2007). The majority of off-reserve SFNs members live in the neighbouring communities of Chetwynd, Kelly Lake, and Fort St. John. Others make their home in Prince George, other areas of the province and throughout Canada.

3.2 Population

3.2.1 Total Population

As seen in Table 3-1, the SFNs community population on East Moberly Lake IR 169 has remained relatively stable over the past decade, and in 2012 totaled 394 residents. The off-reserve population has consistently trended upwards, until the most recent year when it dipped slightly. The off-reserve population has increased from 389 in 2000 to 520 in 2012.

Table 3-1: Saulteau First Nations Population, 2000 to 2012

	2000	2005	2010	2011	2012
On-Reserve and Crown Land	378	418	366	372	394
Off-Reserve	389	416	515	543	520
Total	767	834	881	915	914

SOURCE: ABORIGINAL AFFAIRS AND NORTHERN DEVELOPMENT CANADA (2000) (2005) (2010) (2011) AND SAULTEAU FIRST NATIONS (2012A)

NOTE:

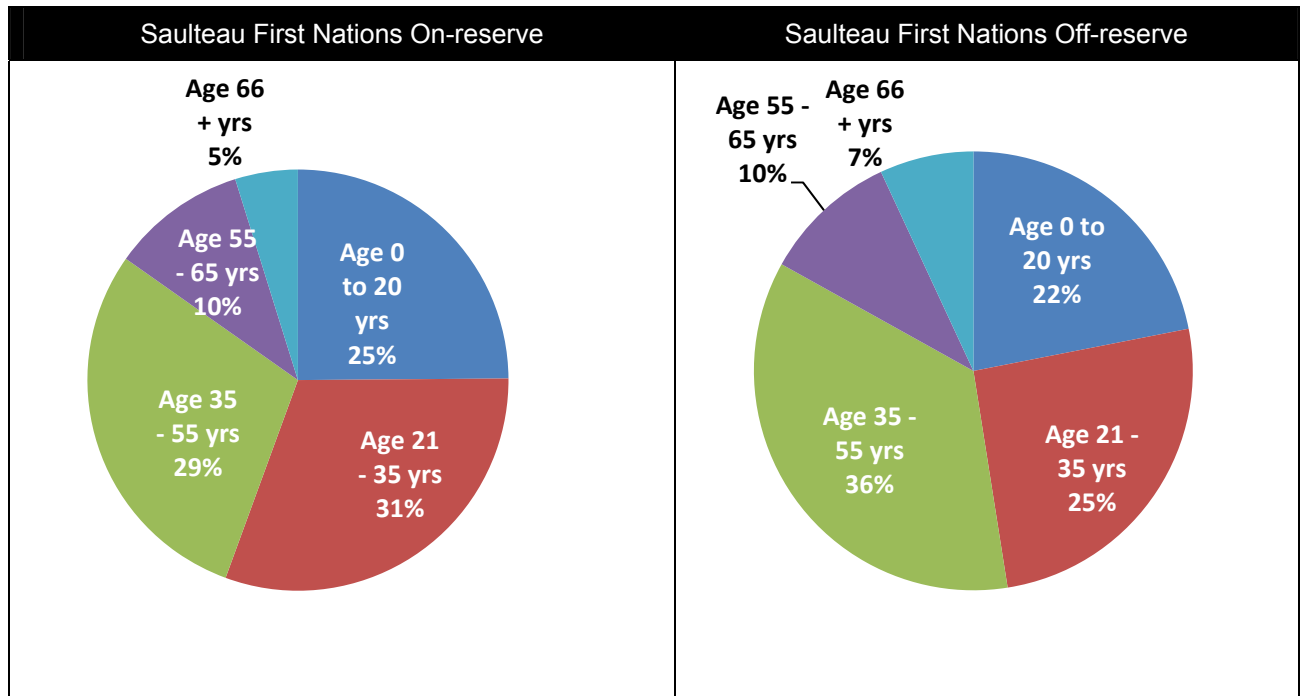
The population counts do not include non-registered people living on-reserve or registered members of other Bands living on-reserve.

The SFNs total population was 914 in 2012, an increase of 19.3% over the past 12 years. In comparison, the Peace River Regional District population increased 14.0% while BC population growth was 13.2% between 2000 and 2011.

3.2.2 Age Characteristics

Figure 3-2 presents the age characteristics for the SFNs on-reserve population at East Moberly Lake IR 169 and the off-reserve population. East Moberly Lake IR has a slightly younger population than the off-reserve population. The off-reserve population has 71% between the ages of 21 years and 65 years. Meanwhile the on-reserve population has 70% of its population between the 21 year and 65 year age group.

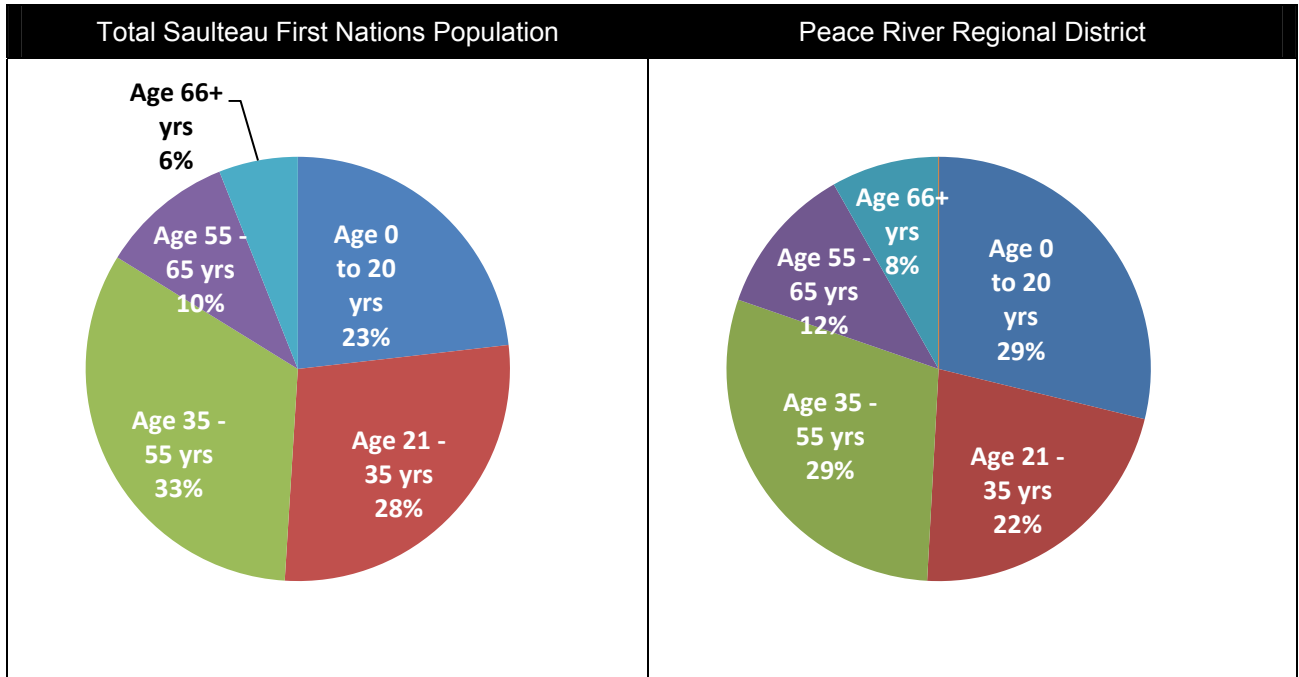
Figure 3-2: East Moberly Lake IR 169 and British Columbia Age Characteristics, 2011



SOURCE: SAULTEAU FIRST NATIONS (2012B)

Figure 3-2 shows population age characteristics for the total SFNs population (both on-reserve and off-reserve) and the Peace River Regional District for 2012. The SFNs population has a smaller share of population in the under 20 year age group and a larger share in the 21 to 55 year age group when compared to the PRRD.

Figure 3-3: Total Saulteau First Nations and PRRD Age Characteristics, 2012



SOURCE: SAULTEAU FIRST NATIONS (2012A) AND BC STATS (2012B)

3.3 Education

3.3.1 Secondary Educational Attainment

Of the 241 SFNs members who responded to the community survey on education attainment, a total of 35% had completed grade twelve with their dogwood diploma. A further 10% had completed grade twelve with their school leaving certificate. Of the remaining respondents, a further 51% said they had not completed grade twelve and the remaining 4% did not answer the question. Among those who had not completed grade twelve, the majority had completed grade eight. The grades between nine and grade eleven represented the period of greatest attrition, or drop-out rates. (SFNs 2012c)

3.3.2 Post-Secondary Education

Among survey respondents, apprenticeships, trades certificates or specialized trade tickets were popular with 13% of respondents having completed a registered apprenticeship program and an additional 37% having a trade ticket or other trade certificate. Thirty-eight percent said they did not have any additional trade training or

work related course work, while 12% did not answer the question. By far the most popular area of training was in first aid, where 72 respondents identified having safety first aid programming and tickets, while another five identified training in specialized first aid programming (i.e., industrial first aid attendant, paramedic).

A variety of other programs were represented, primarily related to the industrial sectors in the region and included support services such as welding and commercial driving licences. Courses in food preparation, camp cook, and culinary arts were also popular.

Forty-five respondents (19%) were identified as having a college or non-university diploma, while 27 or 11% had a diploma from a university, and a further five or 2% had a university degree. (SFNs 2012c)

4 INTEREST AREA 1: CURRENT TRADITIONAL USE OF LANDS AND RESOURCES

4.1 Key Issues

Fishing, hunting, trapping, and gathering are significant activities for SFNs households. Berry picking and harvesting of forest botanicals and herbal plants contribute to the livelihood of the community.

In this section, traditional uses of the land and resources by the SFNs in their traditional territory are identified with respect to the following three activities:

- Fishing
- Hunting and Trapping
- Gathering of local, wild plants and berries

SFNs continue to express concerns about impacts that past and future industrial activities have had on their traditional use of lands and resources. In regards to the proposed Site C project, there are concerns about ecological health, access to traditional use areas and the overall effects on traditional activities, which include:

- Increasing mercury levels in fish;
- Declining fish populations and changing species composition;
- Declining fur-bearer populations;
- Decreasing animal populations targeted for hunting; and,
- Decreasing plant populations used for gathering.

How the Project would interact with other development projects in the region to create cumulative environmental impacts on these traditional use resources is a concern.

This report does not include cultural and spiritual uses of lands and resources by the SFNs.

4.2 Key Indicators

Key indicators for the baseline on current traditional land use and resources are presented in Table 4-1. It is acknowledge that the existing sources do not adequately describe actual baseline conditions.

Table 4-1: Key Indicators for Current Traditional Proposes

Key Indicators	Rationale For Selection	Baseline Data Source
Abundance of Animal resource	Loss and change of land use would change wildlife populations and movement patterns which would affect hunting and trapping activities	Environmental Assessment Reports
Animal and Plant harvesting locations	Indicates where in the Project area that harvesting of plants and animals are taking place	SFNs Survey
Animal and Plant species harvested	Indicates the species of plants and animals that are harvested by the SFNs	UNBC SFNs Food Study SFNs survey
Fish consumption and location of where fish are caught	Identifying fish consumption patterns provides baseline and how dependent the community is on fish that may be affected by the Project	UNBC SFNs Food Study SFNs survey
Wild plants consumption in the community	Change to the availability of wild plants and berries would affect the ability to consume traditional plant foods and medicines	UNBC SFNs Food Study SFNs survey

4.3 Traditional Purposes

Fishing, hunting, and trapping have significant value to the SFNs households, while berry picking and harvesting of forest botanicals and herbal plants contribute to the livelihood of families (Government of British Columbia, Saulneau First Nations, West Moberly First Nation 2006). According to a BC study on food and nutrition habits of SFNs and other First Nations, the percentage of SFN survey participants who hunt and trap for food (47%), fish (42%), collect wild plant food (60%) and plant a garden (30%) were higher than other BC First Nations (UNBC 2011).

A range of traditional foods are consumed by SFNs members. Land mammals make up a portion of the diet for all survey respondents, followed by fish which was consumed by 92%, wild birds 45%, wild berries 98%, wild plant roots, shoots and greens 48%, and beach foods 30%.

The majority of SFNs residents would eat more traditional foods if they had the opportunity, but the lack of equipment, transportation and available time, and the overall cost, represent barriers. Other possible factors that limit access to hunting, fishing or collection of berries included government restrictions and industrial use of the land base, including forestry, hydro, mining, farming, oil and gas, and wind energy activities. SFNs members value traditional foods for their health and nutrition. (UNBC 2011)

Table 4-2 outlines the findings from the SFNs community survey concerning the Site C project. The majority of SFNs members who responded have concerns that wildlife populations would not stabilize at levels to sustain traditional use activities currently undertaken by SFN members.

Table 4-2: Sauleau FNs survey participant responses to issues concerning Site C Project interaction with their traditional uses, 2012

Survey Question	Response		
	Yes	No	NR
<ul style="list-style-type: none"> With the Site C Project, do you feel wildlife populations will stabilize at levels that will sustain traditional use activities that Sauleau members currently undertake? 	28%	67%	5%
<ul style="list-style-type: none"> Do you feel the Site C Project will have impacts on wildlife that you currently use for traditional foods? 	88%	9%	3%

SOURCE: SAULTEAU FIRST NATIONS (2012C)

NOTE:

NR refers to no response or missing data or not applicable.

4.3.1 Fishing

Fishing is an historically important activity for SFNs people and activities associated with fishing (camping, gathering) are still undertaken regularly. Table 4-3 shows the percentage of fish species consumed by SFNs participants in 2009. Based on the survey, salmon (all species), trout, and northern pike are the most popular fish species consumed in the community.

Table 4-3: Key Fish Species consumed by Sauleau FNs survey participants, 2009

Traditional Food	% consumption	Traditional Food	% consumption	Traditional Food	% consumption
Salmon (any type)	68%	Trout (any type)	61%	Burbot	3%
Salmon eggs	5%	Whitefish (any type)	24%	Eulachon	2%
Pacific Cod	8%	Northern pike	37%	Eulachon grease	3%
Ling Cod (Burbot)	45%	Arctic grayling	4%	Sucker	2%
Halibut	27%	Walleye	3%	Bass	2%

SOURCE: UNIVERSITY OF NORTHERN BRITISH COLUMBIA (2011)

Table 4-4 shows the number of SFNs survey respondents who identified the Peace, Moberly, and Halfway river systems as a source of fish they consume and which fish species are most often taken from these systems.

Table 4-4: Saulneau FNs survey participants who consumed fish from the Peace, Moberly, Halfway river systems, 2012

Survey Question	Response		
	Yes	No	NR
<ul style="list-style-type: none"> Do you and your family consume fish caught from the Peace, Moberly, Halfway river systems? 	75%	22%	3%
<ul style="list-style-type: none"> Please identify the fish species caught from the Peace, Moberly, and Halfway river systems. 			
<ul style="list-style-type: none"> Trout 	67%	1%	32%
<ul style="list-style-type: none"> Whitefish 	49%	9%	42%
<ul style="list-style-type: none"> Ling Cod (Burbot) 	22%	18%	60%
<ul style="list-style-type: none"> Northern pike 	54%	4%	42%
<ul style="list-style-type: none"> Dolly Varden 	54%	6%	40%
<ul style="list-style-type: none"> Arctic grayling 	41%	13%	46%

SOURCE: SAULTEAU FIRST NATIONS (2012C)

NOTE:

NR refers to no response or missing data or not applicable.

4.3.2 Hunting and Trapping

SFNs members undertake trapping and hunting activities throughout their traditional territory. While a variety of wildlife were and continue to be hunted and trapped, moose has particular importance. Deer, mountain goat and caribou also play a prominent role in hunting and trapping economies; however, recent declines in populations of mountain goat and caribou have led to a diminished role for these species. The Pine River, Moberly River, Cameron Lakes and Boucher Lake are important areas for hunting and gathering activities (Government of British Columbia, Sauleau First Nations, West Moberly First Nations 2006).

Based on the 2009 survey results, SFNs members eat moose meat an average of 90 days per year. This was followed by elk meat an average of 17 days per year. Of the 45% of SFNs survey participants eating wild birds, grouse was the most popular (40%), followed by geese (23%), mallards (6%), and ptarmigan (3%). (UNBC 2011)

Table 4-5 presents data on SFNs survey participants consumption of specific meat cuts. (UNBC 2011)

Of the 45% of SFNs survey participants eating wild birds, grouse was the most popular (40%), followed by geese (23%), mallards (6%), and ptarmigan (3%). (UNBC 2011)

Table 4-5: Key Land Mammals consumed by Saulteau FN survey participants, 2009

Traditional Food	% consumption	Traditional Food	% consumption	Traditional Food	% consumption
Deer meat	57%	Elk kidney	8%	Sheep meat	5%
Deer liver	6%	Moose meat	100%	Beaver meat	16%
Deer kidney	3%	Moose liver	29%	Black bear meat/fat	2%
Elk meat	76%	Moose kidney	42%	Rabbit	39%
Elk liver	8%	Caribou meat	4%		

SOURCE: UNIVERSITY OF NORTHERN BRITISH COLUMBIA (2011)

When it comes to areas where SFNs people harvest their traditional foods and animals for trapping, the Peace River area remains particularly important. As seen in Table 4-6, a significant number of SFNs members consume ungulates harvested from the Peace River area. The Peace River area is also an important source for small mammals and wild birds that are taken for food consumption.

Table 4-6: Saulteau FNs survey participants who consumed animals harvested from Peace, River Area, 2012

Survey Question	Response		
	Yes	No	NR
• Do you eat moose, deer, elk or other ungulates harvested from the Peace River area?	93%	5%	2%
• Do you eat small mammals harvested from the Peace River area?	63%	33%	4%
• Do you eat wild birds harvested from the Peace River Area?	73%	23%	4%

SOURCE: SAULTEAU FIRST NATIONS (2012C)

NOTE:

NR refers to no response or missing data or not applicable.

4.3.3 Local and Wild Plants

SFNs are active in growing their own food with the majority of SFNs participants (87%) reporting that they ate vegetables or fruits from their own garden or a community garden, compared to 58% of total BC First Nations. The most frequently eaten foods were potatoes, carrots, tomatoes, berries, greens and tree fruits (UNBC 2011).

Even a higher percentage of participants (98%) reported eating wild berries with Table 4-7 showing the most popular varieties being strawberries, Saskatoon, and blueberries.

Table 4-7: Key Wild Berries consumed by Saulteau FN survey participants, 2009

Traditional Food	% consumption	Traditional Food	% consumption	Traditional Food	% consumption
Wild strawberry	86%	Blue huckleberry	46%	Gooseberry	12%
Saskatoon berry	86%	Red huckleberry	26%	Crabapple	9%
Blueberries	85%	Cranberry (Alaska, bog)	30%	Blackberry, trailing	3%
Raspberry, wild	78%	Rose Hips	25%	Blackberry, large	4%
Highbush Cranberry	46%	Chokeberry	14%		

SOURCE: UNIVERSITY OF NORTHERN BRITISH COLUMBIA (2011)

Approximately half the SFNs population reported consuming wild plant roots, tree foods, and shoots and greens (Table 4-8). While many of the products were only consumed by a small percentage of SFNs participants in 2009, it is important to note that some of these products, along with others not mentioned, have important medicinal features.

Table 4-8: Key Plant Roots, Shoots and Greens consumed by Saulteau FNs survey participants, 2009

Plants Roots & Shoots		Tree Foods		Greens and Mushrooms	
Traditional Food	% consumption	Traditional Food	% consumption	Traditional Food	% consumption
Rat root	41%	Birch inner bark	4%	Labrador Tea leaves	15%
Onion	6%	Pine pitch	4%	Stinging nettle leaves	2%
Cow-parsnip shoots	4%	Black poplar buds	4%	Morel	14%
Giant horsetail shoots	2%	Red willow, bark	4%	Pine	5%
Bitterroot	2%	Pine needle	3%	Oyster	2%
Thistle	1%	Poplar inner bark	2%	Chanterelle	2%
Indian potato	1%	Red Willow root	1%	Other mushrooms	5%
Wild Ginger	1%	Birch pitch	1%		

SOURCE: UNIVERSITY OF NORTHERN BRITISH COLUMBIA (2011)

It is likely a larger percentage of SFNs people utilize these products over a period of years because of medicinal needs. This is particularly true within the Peace Moberly Tract, which lies between Moberly Lake and the Peace River and covers an area about 1090 km² in size (Government of British Columbia, SFNs, West Moberly First Nation 2006)

The Peace River Area is a source of wild berries, medicinal plants and other plant parts for SFNs members. A quarter, reportedly use the area for mushroom harvesting as well (Table 4-9).

Table 4-9: Saulteau FNs survey participants who consumed plants harvested from the Peace River Area, 2012

Survey Question	Response		
	Yes	No	NR
• Do you eat wild berries gathered from the Peace River Area?	88%	9%	3%
• Do you eat wild mushrooms gathered from the Peace River Area?	25%	71%	4%
• Do you gather medicinal plants from the Peace River Area?	51%	44%	5%
• Do you eat other plant parts (i.e., roots) gathered from the Peace River Area?	49%	45%	6%

SOURCE: SAULTEAU FIRST NATIONS (2012C)

NOTE:

NR refers to no response or missing data or not applicable.

5 INTEREST AREA 2: COMMUNITY INFRASTRUCTURE AND SERVICES

5.1 Key Issues

Community Infrastructure and Services includes housing, health and social services, childcare, education and training services, emergency services, on-reserve services and transportation.

Major issues relate to service availability and quality in the event of SFNs citizens wishing to relocate back to the community to take advantage of new employment opportunities. They include the following:

- Housing options are limited both on-reserve and in nearby Chetwynd.
- Health and social services are also limited, with SFNs members travelling to Chetwynd and Fort St. John for regular and specialized care.
- SFNs daycare on-reserve is at capacity.
- Emergency services (policing, fire and fire rescue services, and ambulance service) are available, but resourcing and staffing challenges limit effectiveness in serving new residents.
- Public transportation services from the reserve are non-existent and options are poor and restrict on-reserve residents from taking up job opportunities.

5.2 Key Indicators

Key indicators for Community Infrastructure and Services are presented in Table 5-1 along with the rationale and key data sources.

Table 5-1: Key Indicators for Community Infrastructure and Services

Key Indicators	Rationale For Selection	Baseline Data Source
<p>Housing</p> <ul style="list-style-type: none"> - Housing stock on-reserve - Number of households on-reserve - Number of households off-reserve 	<p>On-reserve housing may not be able to accommodate new Project workers and their families</p> <p>Off-reserve members living in the region may face housing challenges</p>	<p>SFNs reports and data</p> <p>Statistics Canada Census</p> <p>SFNs community survey</p>
<p>Health and Social Services</p> <ul style="list-style-type: none"> - Services available on-reserve - Type and number of medical practitioners - Programming available to SFNs members 	<p>Increase in demand for services on-reserve</p> <p>Concern with accessing health care in the region</p>	<p>SFNs reports and news letters</p> <p>Interviews with SFNs staff</p> <p>HealthlinkBC</p> <p>Professional Association websites</p>
<p>Childcare, Education and Training Services</p> <ul style="list-style-type: none"> - Childcare, training delivery organization for SFNs members - Services delivered to SFNs members 	<p>Increasing demand for services provided by SFNs can pressure service access and delivery</p> <p>Details on training can indicate if there is opportunity for Project-related training on-reserve.</p>	<p>SFNs information</p> <p>BC Ministry of Education report</p> <p>Interviews with SFNs staff</p>
<p>Emergency Services</p> <ul style="list-style-type: none"> - Emergency services provided to the SFNs community - Plans and issues with emergency services servicing the SFNs community 	<p>Increase Project population would increase demand for emergency services</p> <p>Status of emergency services provided to SFNs community could indicate challenges of increase service demand</p>	<p>Provincial Government reports</p> <p>PRRD data</p> <p>Interviews with emergency service providers</p>
<p>On-reserve Services and Infrastructure</p> <ul style="list-style-type: none"> - Administrative services - Recreational facilities - Sewer and water infrastructure - Solid waste management - Electrical and telecommunication infrastructure 	<p>Increase population could increase demand for community services</p> <p>Status of on-reserve infrastructure could indicate vulnerability of increased pressure on community infrastructure</p>	<p>UNBC food report</p> <p>Interviews with SFNs staff</p>
<p>Transportation</p> <ul style="list-style-type: none"> - Concerns regarding availability of access to transportation 	<p>Increase in traffic volume affect SFNs members</p> <p>Transportation access could affect ability to seek Project work.</p>	<p>SFNs staff Interviews</p>

5.3 Housing

A study in 2007 found that the oil and gas boom was contributing to high housing costs and housing shortages in northeast BC (Palmer & Associates 2007). The study also found low turnover rates for tenants of Aboriginal housing in the region. High heating costs especially in the winter affects rental and occupancy costs. Palmer and Associates Inc. found housing was limited for families and very little was available to elders, single people or youth. Elder housing was identified as a major need.

The dwelling count on-reserve, as defined by Statistics Canada, was 110 in 2011 (Table 5-2). Almost all were occupied by permanent SFNs residents. In comparison, the SFNs Band list indicates 128 households on-reserve, suggesting either an incomplete enumeration by Statistics Canada, or more than one household occupying a single dwelling.

Table 5-2: Dwelling Counts for Saulteau FNs on-reserve and PRRD, 2011

	East Moberly Lake 169, IRI	PRRD
	Total	Total
Total private dwellings	110	25,854
Private dwellings occupied by permanent residents	103	23,196
Population density per square kilometre	10.4	0.5
Land area (square km)	31.13	117,391.38

SOURCE: STATISTICS CANADA (2012)

The Saulteau FNs community survey looked further at housing issues and availability. A total of 182 responses were received on housing questions. Of this total, 55% of respondents were from on-reserve households, while a further 13% were from off-reserve but on Moberly Lake, and 4% were from within the PRRD. The remaining 28% did not report where their home was located.

Table 5-3 shows select housing indicators based on the 2012 community survey. Most respondents owned their own home, followed by those renting or living in band-owned housing. Interestingly, a significant number of respondents who do not already live on-reserve indicated that they would be interested in relocating to the community if suitable housing were available.

The quality of housing appears to be a concern for the Saulteau community as 44% of respondents indicated their dwellings were in need of major repairs and a further 21% identified the need for minor repairs. Of the housing stock identified by respondents, most dwellings have between 4 and 7 rooms and were built between 1971 and 2000.

Table 5-3: Saulteu FNs survey participant responses to Housing Questions, 2012

Survey Question	Response				
	Owned	Rented	Band-owned	NR	
• Is this dwelling:	34%	25%	18%	23%	
•	No	Yes	Already on reserve	NR	
• If suitable housing was available on-reserve, would you be interested in relocating to the community?	6%	37%	47%	10%	
•	No	Yes minor	Yes major	NR	
• Is this dwelling in need of any repair?	10%	21%	44%	25%	
	2-3 Rooms	4 – 5 rooms	6 – 7 rooms	8+ rooms	NR
• How many rooms in dwelling:	10%	24%	35%	8%	23%
	1 – 2 bdms	3 bdms	4 bdms	5+ bdms	NR
• How many bedrooms in dwelling?	13%	38%	9%	5%	24%
	1960 - 1970	1971 - 1990	1991- 2000	2001+	NR
• When was the dwelling originally built?	7%	23%	34%	8%	28%

SOURCE: SAULTEAU FIRST NATIONS (2012C)

NOTE:

NR refers to no response or missing data or not applicable.

5.4 Health and Social Services

5.4.1 Saulteu Community Health and Wellness Services

5.4.1.1 Current Situation

Organization

The SFNs has a Community Wellness Centre that provides culturally appropriate health and wellness services to the community. The health management structure includes the following roles:

- Band Council Health Representative: liaise between local, regional, provincial and federal health departments.

- Health Director: manages day to day services of the health management system.
- Community Health Representative: works in and with the community to identify health risks or issues requiring intervention.
- Wellness Counsellor: promotes healthy lifestyles, alternatives to drug and alcohol, provides education, prevention, one on one group counselling, crisis intervention, and referrals. Programming promoting wellness such as the community garden, art division, and women's group meetings are also coordinated by the wellness coordinator (SFNs 2009).
- Community health and home care nursing (two nurses providing one full-time equivalent of service): provides health advisory and specialized services, and implements disease prevention workshops, provides immunizations, as well as homecare assessments and treatment (SFNs 2012d).

Service Delivery

There are currently several programs being delivered through Health Canada in the community, including:

- Diabetes program, with a focus on education and prevention;
- Prenatal program providing services to pregnant women and focusing on education and having healthy babies;
- Children's Oral Health which provides oral care to children ages 0 to 7 and focuses on prevention of tooth decay;
- Foot Clinic targeted at elders and foot hygiene;
- HIV and AIDs programming and workshops; and,
- Tuberculosis programming.

The community is also visited once or twice monthly (depending on demand) by a physiotherapist who attends to residents who have been referred for specific treatments. A dental therapist visits as part of the children's oral health program. The Saulteau health programming includes annual funding for patient travel and covers members and non-members who have status and have referrals to see a doctor or other health care provider. (Totusek 2012, pers. comm.)

The Saulteau community has access to the Tansi Friendship Society Centre located in Chetwynd and provides services to native and non-native residents in the area. Services include food bank, summer student employment, intervention and prevention

workshops, job bank, youth group, cultural activities, employment search assistance, income tax preparations, and referrals and resource information. Table 5-4 outlines services and sub-organizations of the Tansi Friendship Centre.

Table 5-4: Services and sub-organizations of Tansi Friendship Centre Society

Service	Description
Early Childhood Education	Provides services to children and parents/caregivers to enrich childhood learning and development. Services include daily activities and healthy snacks for children, and developmental techniques in the form of play.
Elders Circles, Literacy	Offers a drop-in and luncheon program for elders. Health care staff are available to do blood pressure checks, weigh-in, blood sugar monitoring and to answer any health questions and provide emotional support.
Family Support Services - Tansi	Provides in-home and in-office parenting courses and information, advocacy, and program referrals. Clients are self-referred or referred by the Ministry of Children and Family Development.
Health Promotion & Prevention	Provide services and programs related to chronic and infectious diseases, a smoke-free society, and education regarding public health issues.
Mental Health and Addictions Counselling and Outreach Services	Offers outpatient mental health and addiction services for individuals and families within the community.
Positive Parenting	Provides parents of small children with an opportunity to connect with peers and learn information about nutrition, child development, and healthy parenting.
Youth Outreach	Provides mediation to youth 12 - 21 years and their families in the Chetwynd region. Topics include parent/teen communication, anger management, family roles and responsibilities.

SOURCE: BRITISH COLUMBIA HEALTHLINKBC (2012)

5.4.1.2 Future Outlook

The Saulteau health services programming is currently transitioning from Health Canada to First Nations Health Authority – this started in 2005 and is on-going. The end result will be health delivery moving from a program based funding approach through Health Canada, to one focused on providing services based on community needs. The key change will be the shift in financial resources to local community health priorities. Saulteau health services staff have also begun working with Northern Health to provide services through a new health accord. (Totusek 2012, pers. comm.)

5.4.2 Regional Medical Services

The closest hospital is the Chetwynd Hospital and Health Centre, a 12-bed facility with seven long-term care beds and five acute beds that has been successful in integrating community health and acute care services in one location. Services include 24/7

emergency services, medical inpatient, palliative, public health nursing, home and community nursing and home support, respiratory therapy and aboriginal liaison. Emergencies of a more serious nature are typically transferred to the regional hospital in Dawson Creek. Chetwynd has four general practitioners, down from five in 2005, although the general practitioners in Chetwynd are accepting new patients (College of Physicians and Surgeons in British Columbia 2011).

Chetwynd has one resident dentist, and many Saulteau members regularly travel to Fort St. John for dental care. In 2011, Fort St. John had nine dentists and Dawson Creek had eight. For specialized dental care there is one dentist specializing in orthodontics and dentofacial orthopaedics in Dawson Creek, while there is an additional specialist who travels from the Lower Mainland to provide oral and maxillofacial surgery. (College of Dental Surgeons of British Columbia 2011)

5.5 Childcare, Education and Training Services

5.5.1 Muskoti Learning Centre

5.5.1.1 Current Situation

Organization

The philosophy of the Muskoti Learning Centre is as follows:

"We believe in an education system which is flexible and respects learners' needs. We believe in the responsibility of the learner to choose their education path and to strive toward the fulfillment of their goals. We believe in providing personal attention and assistance in helping learners achieve their goals, and in the delivery of all our programming" (SFNs 2011).

The Head Start Program for children aged 3-5 years is offered to prepare children for kindergarten.

Service Delivery

On reserve, the Muskoti Learning Centre provides education and training services to all ages, including:

- Elementary and secondary school students in kindergarten to grade 12.
- Adult education – offering courses leading to the Adult Dogwood (actual grade 12 completion) or the Graduation Equivalence Diploma (GED).
- Workshops and targeted courses – offered as availability and demand dictate.

- Post-secondary trades and training – a range of work related courses have been offered (i.e., WHMIS, S-100 Fire Suppression). (Muskoti Learning Centre. 2012a)

School-aged children can also attend the nearby Moberly Lake Elementary. The Moberly Lake Elementary School is located on Moberly Lake between the West Moberly First Nations reserve and the SFNs reserve. The enrolment in 2011/12 was 36 students, down from 40 students in 2007/08 but up from 33 in 2010/11. There were 35 aboriginal students in the school in 2011/12 (BC Ministry of Education. 2011). Students are also bussed in to Chetwynd to the following elementary schools: Don Titus Elementary, Little Prairie Elementary, and Windrem Elementary (Norris 2012. pers. comm.).

Following grade 7, SFNs students have the option to be bused to Chetwynd Secondary School 29 kilometres away in Chetwynd or complete their high school grades at the Muskoti Learning Centre. In the 2011 school year there was 99 school age children on-reserve. In addition, 34 SFNs students were attending university programs and courses on either a part-time or full-time basis (Norris 2012, pers. comm.).

Training Activity

The SFNs has assisted a number of Band members to further their education by participating in post-secondary programming, trades training and specialty training courses. Table 5-5 highlights the numbers of SFNs members and the program they completed while receiving funding support between 2001 and 2011.

Table 5-5: Number of SFNs Members By Completed Program, 2001 to 2011

Program	Number	Program	Number
Applied Business Technology	7	Meat Cutting	1
Bachelor of Science	2	Master Business Administration	1
Business Administration	1	Office Programming	2
Engineering	1	Social Services Worker Diploma	3
Esthetics	1	Seismic Field Operations	1
Forest Technician	2	Welding Tickets	2
Total Students			25

SOURCE: SAULTEAU FIRST NATIONS (2012E)

Twenty-five members have received degrees, certificates or otherwise completed training programs training programs while on funding support over the past ten years. In addition, several SFNs SFNs members have obtained trade tickets, specific courses, training or programs with support or support or partial support from the Band. These courses and programs are outlined in

Table 5-6 below.

Training remains an important objective for many Saulteau members with 18 of 240 participants or 8% in the Saulteau FNs community survey stating they enrolled in a training program in 2012. Most were taking programs within the region, with Northern Lights College being the most popular institution to be studying at, although two individuals were taking programming from institutions in Alberta. When respondents were asked if there was a training program or course that they would like to take over the next twelve months, 118 or 49% said yes there was. These respondents identified a variety of courses with the more popular responses including:

- Safety and first aid tickets;
- Environmental services;
- Heavy duty equipment operator;
- Commercial licenses and air brakes;
- Medical office assistant and administration;
- Hairdressing and esthetics;
- Course specific to forestry and mining (i.e., faller ticket); and,
- Welding and pipefitting. (SFNs 2012c)

Table 5-6: Number of SFNs Members By Course, Training and Program, 2001 to 2011

Program	Number	Program	Number
4th class power engineering	2	Fashion and Merchandising	1
Adult Basic Education	1	Grad Studies/University Transfer	15
Aboriginal Health	1	Geographic Information System	1
Applied Business Technology	3	Heavy Equipment Operator	1
Accounting	1	Nursing Programs	4
Advanced Business mgmt. Management Program	2	Hotel and Resort Mgmt	1
Arts program/social work	1	Human Service Worker Program	1
Audio engineering music production	1	Indigenous Fine arts	1
Automotive Service Technician	1	Make-up artistry	1
B Arts/ BSc/ BA Commerce	13	Multimedia and Web dev.	1
Bachelors in Social Work Social Services Workers Diploma	5	Natural Resources Technology	1
Business Office Specialist	1	Oil & Gas Processor level 1 & 2 Oil & Gas Operator/Accounting	3
Camp Cook	1	Political Dev & Leadership	1
Carpentry & apprentice CSTS Construction safety officer program	3	Medical Intuition Medical Terminology Medical transcriptionist	3
Business Mgt/ Business Admin	4	Park & Rec	1
Computer network electronics technology/Computers	2	Power Engineering 3rd class	3
Commercial Floristry	1	High School level Courses/College Prep Programming	3
Criminology	1	RCMP Prep	1
Culinary Arts Program	1	Recording Arts Canada/ Recording Sound and Design	2
Digital filmmaking	2	Travel and Tourism	1
Electrical apprenticeship	1	Welding Level C	1
Esthetics; Hairdressing	3	Workshops	1
Total Students			99

SOURCE: SAULTEAU FIRST NATIONS (2012E)

Daycare

The availability of adequate daycare space was addressed in the 2012 SFNs Community Survey. While most respondents indicated that the question did not apply to them, those that did need daycare faced challenges. A total of 31 respondents or 80% of respondents that required daycare said they could not find it, while eight or 20% of

respondents said they had adequate daycare. Nineteen (58%) of respondents indicated that they paid for daycare, while 14 that used daycare mentioned that they did not pay for services.

5.5.1.2 Future Outlook

The SFNs are experiencing a growing number of applicants applying for post-secondary training assistance. Changes that have come with Bill C-31 may translate into greater demand from new SFNs members moving forward. The community is looking at revamping post-secondary policy to better manage the money they have to handle the increasing demand (Norris 2012, pers. comm.). Based on the SFNs Community Survey results, it also looks like many members are interested in taking courses that will help them in their career pursuits in the future.

5.6 Emergency Services

5.6.1 Police Services

5.6.1.1 Current Situation

Police services are provided by the RCMP provincial detachment based in nearby Chetwynd. The Chetwynd detachment has 12 officers, plus one officer from South Traffic Division who reports to Fort St. John (Tremblay 2012, pers. comm.). There are two public employees who provide support services to the detachment. The 12 officers service a population in the Chetwynd area of approximately 5,590 including the SFNs community. The case load per officer in 2010 for the Chetwynd detachment was 88, which is higher than the case load average of 78 per officer for all police detachments in the PRRD. (BC Ministry of Public Safety 2012)

Table 5-7 outlines the crime rate statistics for Chetwynd in 2010 by type of crime and compares these rates with the PRRD and provincial averages.

Table 5-7: Crime Rate Statistics By Jurisdiction in 2010

Policing Jurisdiction	Violent Crime	Property Crime	Other Crime	Total Criminal Code Offen.
Chetwynd Provincial	27.0	64.9	64.9	156.8
Total Peace River Regional District	24.8	49.0	37.5	111.3
Total British Columbia	15.6	51.1	17.3	84.0

SOURCE: BC MINISTRY OF PUBLIC SAFETY (2012)

NOTE:

Crime rates are expressed in terms of number of offences per 1,000 residents.

The Chetwynd area experienced a higher rate of violent crime, property crime and total criminal code offences per capita in 2010 than is observed in the PRRD or the province.

5.6.1.1 Future Outlook

The priorities in the Chetwynd detachment's Annual Performance Plan include continuing focus on drug trafficking, traffic enforcement and community involvement. The detachment has one First Nation Liaison officer who is working in the SFNs and West Moberly First Nations communities on maintaining a police presence and participating in criminal code offence investigations. Meetings with band councils reflect an on-going concern around drug related issues. (Tremblay 2012, pers. comm.)

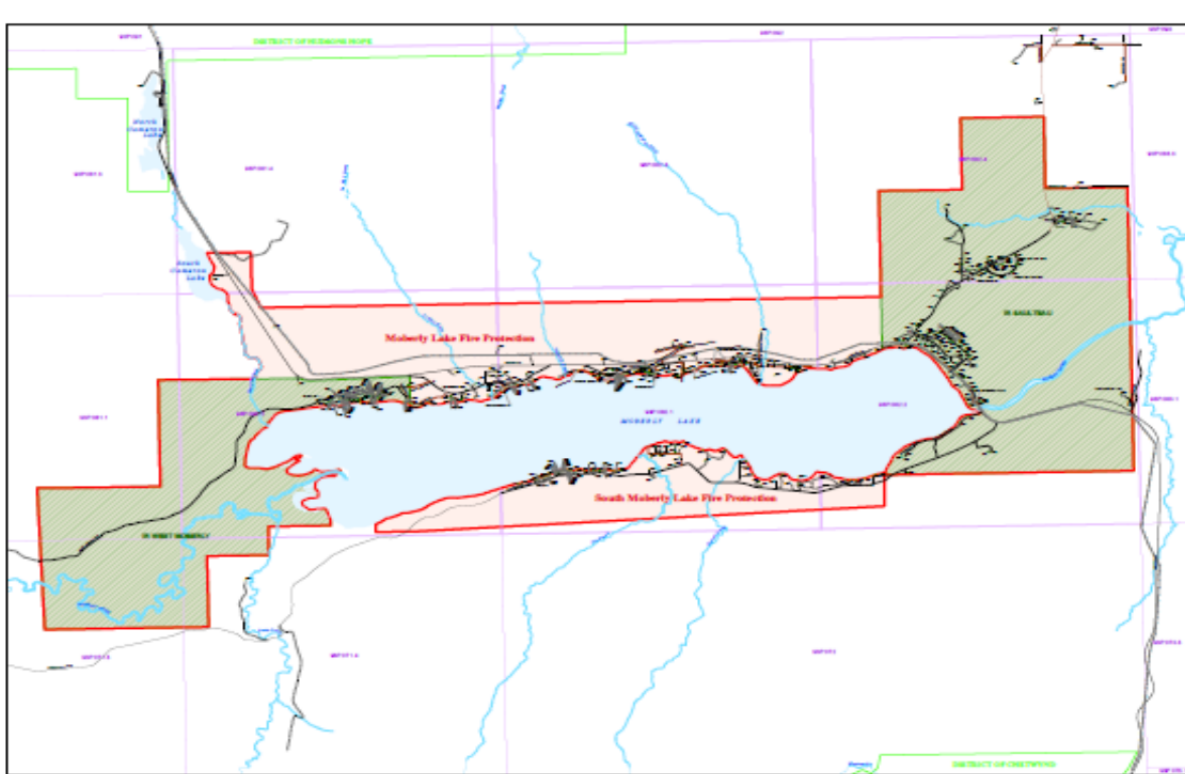
5.6.2 Fire Services

5.6.2.1 Current Situation

The Moberly Lake Fire Department is a registered non-profit society and serves the Moberly Lake area. The Moberly Lake Fire Protection area (Figure 5-1) includes fire protection to the SFNs living on-reserve and off-reserve around Moberly Lake (PRRD. 2012a). The funding arrangement is based on approximately one-third shares from the West Moberly Lake First Nations, SFNs, and the residents living in the Moberly Lake Fire Protection area in the Peace River Regional District. In 2010, the operating expenditures for the fire service was \$59,570 with additional expenditures on capital items (PRRD. 2011).

The fire station located on the north shore of Moberly Lake is approximately four kilometres from the Saulteau administrative office with all of the reserve falling within the eight kilometre service area required to receive the maximum deduction for fire insurance purposes (Henry 2012, per. comm.).

Figure 5-1: Moberly Lake Fire Protection Area



SOURCE: PEACE RIVER REGIONAL DISTRICT (2012C)

The department consists of approximately eight active volunteer fire fighters with approximately two being from the SFNs.¹ The department is currently without a fire chief. The department operates three fire trucks including:

- Truck 1, a 2000 International pumper/tender 4X4 truck that can carry five fire fighters and is built by Hub. The truck is equipped with a 1,000 gallon tank and can pump 1050 gallons per minute (gpm). It is also equipped to discharge foam and is equipped to fight structural fires.
- Truck 2, a 2010 International tender fire truck specially built by Fort Garry that can carry three firefighters and has a hub pumper that carries 1,700 gallons of water and can pump at 450 gpm. The truck is used as a support truck for water and equipment and is set up mainly to fight grass and interface fires.

¹ Department actually has 15 volunteer members signed up but only 8 members regularly attend weekly practices.

- Truck 3, a 2010 International 4X4 fire truck was specially built by Fort Garry and can carry 750 gallons and pump water at 1050 gpm. It also has a calf system that can discharge compressed air/foam. The truck can carry a crew of five and is a structural firefighting truck.

The two new trucks specially built for Moberly Lake are designed for fighting fires in extremely cold weather and have the capability to be used for structural and brush fire fighting situations (Henry 2012, pers. comm.).

As seen in Table 5-8, the Moberly Lake Fire Department has experienced between nine and 50 calls annually over the past seven year period and represents between 1% and 7% of all 911 fire calls in the South Peace Fire area.

Table 5-8: Moberly Lake 911 Fire Calls and Share of Dawson Creek Fire Dispatch (2004 to 2011)

2004	2005	2006	2007	2008	2009	2010	2011
19	18	50	21	18	20	13	9
1%	3%	7%	3%	3%	3%	2%	1%

SOURCE: PEACE RIVER REGIONAL DISTRICT (2012B)

5.6.2.1 Future Outlook

The Moberly Lake Fire Department is currently without a fire chief (August 2012) and needs to increase the number of active volunteer firefighting members. There have been discussions around succession planning and recruiting is on-going to increase the number of active volunteer fire fighters in the department. The idea of hiring a regional fire chief to take on administrative and preventative activities is being considered in the Peace River Regional District to help the department and other rural departments meet reporting requirements and proactively prepare rural communities for prevention. (Henry 2012, pers. comm.)

5.6.3 Ambulance Services

5.6.3.1 Current Situation

The SFNs community at Moberly Lake is serviced from the BC Ambulance Service out of Chetwynd. In Chetwynd, BC Ambulance has a Unit Chief, 13 part-time paramedics and two ambulances that provide coverage for a service area that includes about half way to neighbouring communities of Hudson’s Hope, Tumbler Ridge, Dawson Creek and Mackenzie. The Chetwynd ambulance service typically responds to between 600 and 700 calls per year (Hendley 2012, pers. comm.). Ambulance service from surrounding areas is used to backfill ambulance service in Chetwynd when the need

arises and, conversely, Chetwynd crews will work in other areas in the PPRD as required. (McCartney 2012, pers. comm.)

5.6.3.2 Future Outlook

The BC Ambulance service is continually recruiting new paramedics to augment their staffing complement (Hendley 2012, pers. comm.). There is constant turnover of paramedics as many seek and find work in the oil and gas sector.

5.7 On-reserve Services and Infrastructure

5.7.1 Local Administrative and Recreation Facilities

5.7.1.1 Current Situation

Administrative Services

The Band administrative office is located on-reserve. Several departments are co-located in the office, including administration, housing, public workers, finance, and land management. The building includes a meeting room and office space for Chief and council. The administration building was formerly a school and includes a gymnasium that is used for a variety of purposes including community meetings and workshops.

A new office consisting of modular trailers is being constructed to house Chief and Council, administration, health and lands staff and is expected to be completed in 2013. The existing office will be the new location for the Muskoti Learning Centre (Publicover 2012, pers. comm.)

Recreation Facilities

The community has a gym and weight room in the existing administrative building that is available to the community. The community also has a ball diamond, and hosts Pow Wows and events at the Pemmican Grounds. There is also a band hall used for a variety of community activities such as the elder lunches.

In nearby Chetwynd there is the regional sports centre that offers a variety of sport venues including ice rink, curling and indoor swimming pool that is used by the regional population.

5.7.2 Sewer, Water and Solid Waste Services and Infrastructure

5.7.2.1 Current Situation

Sewer Infrastructure

For the Saulteau community, all households on-reserve are on individual septic tanks and fields (Glover 2012, pers. Comm.).

Drinking Water System

Residents on the East Moberly Lake Reserve (IR 169) have access to potable water through the community water infrastructure. This water is sourced from the community wells (groundwater) and water reservoir. There are two above ground metal storage tanks associated with this system. One tank has a capacity of 202,000 litres while the other has capacity of 330,000 litres. This system is serviced by a trained (certified) water treatment plant operator with the water system providing water to most of the on-reserve population. A local creek is a secondary water source for some community members. (UNBC 2011)

Approximately 10 households are not part of the water distribution system and get their drinking water from shallow wells. The water distribution system does not have a water treatment plant located on-reserve, and the well water is not filtered or treated with any chemicals. However, plans are in place that would see a chlorination system put in place over the next year or so. The pipes of the distribution system are made of PVC. In 2011, there were boil water advisories that were associated with the regional flooding that took place. Other than that, there have been no boil water alerts or water shortages reported for those households drawing water from the community system. (Glover 2012, pers. comm.) However, the households that get their drinking water from shallow wells are on a continuous precautionary water boil advisory (UNBC 2011).

Solid Waste

The SFNs community provides solid waste collection services for households and businesses on-reserve. The Saulteau have an agreement with the Peace River Regional District for solid waste disposal and all residential solid waste is trucked to the nearby Regional District waste collection site (Glover 2012, pers. comm.).

5.7.3 Electrical and Telecommunication Infrastructure

5.7.3.1 Current Situation

Electricity

The community has access to electrical services provided by BC Hydro. The reserve has one phase (electrical outlets of 120 volts) throughout the reserve with three phase power located at the pump house (Glover 2013, pers. comm.).

Telecommunication

Telus is the primary telephone provider to the community with phone service being provided by land lines. There is no telephone cell service available on-reserve or in the area around Moberly Lake. High speed internet service is available for the Band administration, Muskoti Learning Centre and Health and social service centre. However, households on-reserve continue to have access to dial up internet only.

5.7.3.2 Future Outlook

Expanding and upgrading telecommunication service is desired in the community so households on-reserve gain access to high speed internet and telephone cell services.

5.8 Transportation

5.8.1 Road Infrastructure and Transportation Services

5.8.1.1 Current Situation

Road Infrastructure

The SFNs community is located on the northeastern shore of Moberly Lake and is adjacent to Highway 29. Boucher Lake Road runs north in the community and is paved for approximately three kilometres, providing direct access to administrative offices.

Transportation Services

There is a bus that operates two days a week between the Saulteau community and Chetwynd, taking community members to medical appointments. The bus leaves at 9 am for Chetwynd on Tuesdays and Thursdays and returns at noon (Totusek 2012, pers. comm.)

However, transportation challenges remain for Saulteau community members as illustrated in Table 5-9 where many adults in the community do not have a valid driver's

licence and 21% identify that they have had challenges getting to a job site in the last 12 months.

Table 5-9: Saulteau FNs survey participant responses to Transportation Questions, 2012

Survey Question	Response		
	Yes	No	NR
<ul style="list-style-type: none"> Do you have a valid driver's license? 	60%	35%	5%
<ul style="list-style-type: none"> Have you faced challenges in getting to and from a job site in the last 12 months? 	21%	68%	11%

SOURCE: SAULTEAU FIRST NATIONS (2012C)

NOTE:

NR refers to no response or missing data or not applicable.

While most had no issues in getting to work over the past twelve months, the 21% that did have challenges identified several common issues including:

- No vehicle or transportation (25 responses);
- No driver's licence (6 responses)
- No drivers (3 responses)

There appears to be support for a daily transportation between Moberly Lake and Chetwynd, with 173 of 240 or 72% of respondents saying they would use the service. The respondents also indicated that they would use the service to:

- Get to work (141 respondents 59%);
- To access health care services (17 respondents or 7%); and,
- To access shopping and other (6 respondents or 6%). (SFNs 2012c)

5.8.1.2 Future Outlook

Overall, there is a desire to gain better transportation options to the nearby community of Chetwynd, and discussions in the community suggest there is a growing number of young people in the community who do not have their driver's license.

6 INTEREST AREA 3: ECONOMIC ACTIVITIES

6.1 Key Issues

There is a significant level of regional development activity underway in Northeast BC, with numerous energy, forestry, mining, and oil and gas either planned or in development. Agriculture and tourism continue to make an important contribution to the region's economy. For the SFNs, each sector contributes to the economic well-being of the community through employment and business opportunities. Key economic issues are as follows:

- Access to employment opportunities in all sectors.
- Training and skill development opportunities.
- Access to contracting and procurement opportunities in all sectors.

6.2 Key Indicators

Key indicators for economic activities are presented in Table 6-1 along with the rationale and key data sources.

Table 6-1: Key Indicators for Economic Activities

Key Indicators	Rationale For Selection	Baseline Data Source
Labour force <ul style="list-style-type: none"> - Work activity - Industry - Employer - Travel patterns - Level and source of income 	Employment and employment income are a major source of wealth for the community.	SFNs Community Survey
Business Development <ul style="list-style-type: none"> - Band owned businesses - Independent contractors 	SFNs economy is linked to the existing basic sector business activities in the region.	Environmental Assessments SFNs business information Interviews with business operators/owners

6.3 Baseline Conditions

6.3.1 Labor Force and Incomes

6.3.1.1 Labour Force Characteristics

Basic labour force characteristics of survey respondents are shown in Table 6-2. Thirty-four percent of respondents worked sometime in May 2012, while 53% did not work. The average number of hours worked in May was 126 hours for the month. The hours worked by individuals ranged from a low of two to a high of 360.

Of those who did not work in May, 2012, many were either retirees or homemakers who were not participating in the labour force. Thirteen percent were either on vacation, ill, temporarily laid off, or had arranged to work in the next four weeks.

Table 6-2: Sauleau FNs survey participant responses to Employment Questions, 2012

Survey Question	Response				
	Number Worked	Number Not Worked	NR	Average Hours Worked	
<ul style="list-style-type: none"> In the Month of May 2012, how many hours did this person spend working for pay or in self-employment? 	34%	53%	13%	126	
	No	Yes	NR		
<ul style="list-style-type: none"> In the month of May 2012, was this person on temporary lay-off or absent from work or business or made arrangements to start work in the next 4 weeks? 	56%	13%	31%		
	No	Yes	NR		
<ul style="list-style-type: none"> Did this person look for paid work during the month of May? 	25%	12%	63%		
	No	Yes	NR		
<ul style="list-style-type: none"> Could this person have started a job in May had one been available? 	55%	20%	25%		
	In 2012	In 2011	Before 2011	Never	NR
<ul style="list-style-type: none"> When was the last work for pay or in self-employment, even for a few days? 	34%	12%	23%	3%	29%

SOURCE: SAULTEAU FIRST NATIONS (2012C)

NOTE:

NR refers to no response or missing data or not applicable.

Another 12% of respondents were actively looking for work, mainly for full-time employment, while 20% could have taken a job if it had been available. Finally, a third of respondents who had not worked in May had worked in the first four months of the year, whereas another third had not worked since 2011 or before.

The resource industry and public services are important employers for SFN members, as noted in Table 6-3. The three primary industries of logging, mining, oil and gas represents 22% of all jobs identified by survey respondents. If construction and manufacturing are considered then this proportion would be much higher.

Education, health and government services are also important, collectively employing 14% of respondents.

Table 6-3: Business, industry or service employed in, 2012

	Response
1 Logging	4%
2 Mining	10%
3 Oil and Gas	8%
4 Farming	1%
5 Education	3%
6 Health	3%
7 Government	8%
8 Retail	5%
9 Other	31%
NR	27%
Total	100%

SOURCE: SAULTEAU FIRST NATIONS (2012C)

NOTE:

NR refers to no response or missing data or not applicable

Major employers are noted in Table 6-4. The coal industry is represented by Cardero Coal and Walter Energy, which employ eleven and nine survey respondents, respectively. SFNs was the biggest employer, with 28 respondents, or 12% of the total.

Table 6-4: Major Employers

	Response
4 Evergreen	4%
Cardero Coal	5%
Crowfeathers	3%
Deep Basin Energy	1%
NENAN	2%
North American Construction Group	1%
Saulteau First Nations	12%
Walter Energy	4%
Other	36%
NR	32%
Total	100%

SOURCE: SAULTEAU FIRST NATIONS (2012C)

NOTE:

NR refers to no response or missing data or not applicable

The survey also asked respondents how far they travel to their regular place of work and the travel time. The results are presented in Table 6-5. Approximately one quarter work less than five kilometres away, while 14% travel between six and 30 kilometres, and 29% more than 30 kilometres. Almost half of respondents went to work and returned home daily, with 21% regularly away, the majority of these respondents being in camps.

Table 6-5: Travel distance and time to work, 2012

Survey Question	Response			
	Less than 5 Km	6-30 Km	Greater than 30 Km	NR
• How far must you travel to work?	26%	14%	29%	31%
	No, return home daily	Yes, regular work away	Yes, work in camp	NR
• Does your work typically involve travel away from home for periods of time?	47%	9%	13%	31%

SOURCE: SAULTEAU FIRST NATIONS (2012C)

NOTE:

NR refers to no response or missing data or not applicable.

6.3.1.2 Personal Income Characteristics

Approximately half of survey respondents reported earned incomes of less than \$15,000 annually. These respondents were also less likely to be active labour force participants, so the opportunities for earned income would be limited.

Table 6-6: Sauleau FNs survey participant responses to Total Earned Income , 2011

Survey Question	Response
<ul style="list-style-type: none"> • What was the total income earned in 2011? 	
<ul style="list-style-type: none"> - Less than \$5,000 	14%
<ul style="list-style-type: none"> - \$5,000-\$10,000 	20%
<ul style="list-style-type: none"> - \$10,000-\$15,000 	16%
<ul style="list-style-type: none"> - \$15,000-\$20,000 	4%
<ul style="list-style-type: none"> - \$20,000-\$25,000 	5%
<ul style="list-style-type: none"> - \$25,000-\$30,000 	4%
<ul style="list-style-type: none"> - \$30,000-\$40,000 	8%
<ul style="list-style-type: none"> - \$40,000-\$50,000 	3%
<ul style="list-style-type: none"> - \$50,000-\$60,000 	10%
<ul style="list-style-type: none"> - Over \$60,000 	7%
<ul style="list-style-type: none"> - Not applicable or missing 	9%

SOURCE: SAULTEAU FIRST NATIONS (2012C)

The breakdown of personal income by source is presented in Table 6-7. Close to half of respondents reported wage and other employment income as their main source. Non-employment sources of income included social assistance, retirement income, training allowances and self-employment.

Table 6-7: Saulneau FN's survey participant responses to Source of Income , 2011

Survey Question	Response
• What was the main source of personal income in 2011?	
- Wage/Employment Income	45%
- Self-Employment Income	3%
- Pension/Senior Benefits Income	12%
- Social Assistance	16%
- Training Allowance	3%
- Investment Income	0%
- Other	8%
- Not applicable or missing	13%

SOURCE: SAULTEAU FIRST NATIONS (2012C)

6.3.2 Business Development

Hunting and trapping remain a part of the economy for many Saulneau as they rely on traditional practices for food security and household income. Agriculture and food, forestry, minerals, and tourism are sources of direct employment and contracts for SFNs members. The oil and gas sector also generates employment through archaeological assessments as well as operational contracts.

Resource revenue sharing agreements signed with resource developers in the region provide income to the community.

6.3.2.1 Band Own Businesses

4 Evergreen Resources Inc. (4EG), established in 2005, is a growing resource development front end company providing services to the construction, transportation, mining, energy and forestry sectors. It provides heavy equipment, seismic hand-cut crews, labourers, and mulchers and is involved in road and lease building, right of way clearing, bridge building, logging, industrial first aid and other related industrial activities. (Industry Canada 2012)

The company employs 60 workers year-round and is planning for further expansion as the opportunities become available. The company also hires other regional and local companies on a subcontracting basis for specific projects. Looking ahead, the company

would have capacity to work on additional energy projects. (Paquette. 2012. pers. comm.)

6.3.2.2 Joint Ventures and Partnerships

Saulteau First Nations are involved in a number of joint ventures and partnerships with other First Nations and non-Aboriginal companies.

Three Nations Ventures. This company is a partnership between the Saulteau, Blueberry River, and West Moberly First Nations which originated through a joint venture with Tembec in 2002. Three Nations Ventures contracted with Tembec including log yard management at their Chetwynd mill site. It also included operation of the scaling and smelting activities at the mill site. In addition, Three Nations performed refuse hauling and maintained 28 kilometres of road associated with Tembec's woodland operations. The company owns several pieces of heavy machinery for the forest industry (Brunet 2004). In 2012, employment stood at approximately 12 workers with most of this associated with the log yard operations (Aird 2012, pers. comm.). However, Tembec announced the indefinite closure of this operation effective September 2012 (Tembec 2013).

Six Nations Ventures. In 2006 Peace Valley OSB opened a state-of-the-art oriented strand board plant in Fort St. John.² As part of this new operation, Six Nations Ventures was formed as a joint-venture between six Treaty 8 communities that are signatories to a Memorandum of Agreement (MOA) with Peace Valley OSB. Six Nations Ventures has an agreement with Peace Valley OSB to manage yard operations at the mill in Fort St. John (Peace Valley OSB. 2006). Six Nations Ventures also operates two logging trucks that haul for Peace Valley OSB. In 2012, employment with Six Nations Ventures was ten workers with yard employees working year-round, while log hauling employment being more seasonal (Leahy 2012, pers. comm.).

Twin Sisters Native Plants Nursery. Formally announced in November 2011, Twin Sisters Native Plants Nursery is the Saulteau First Nations' newest business venture and is a three-way partnership with West Moberly First Nations and Walter Energy. Walter Energy is a metallurgical coal producer for the global steel industry with three mines in northeast British Columbia. Located between the two First Nation partners, the nursery will cultivate native plants initially for use in mine site reclamation at Walter Energy and Western Coals mine sites. (Coffee Talk Express 2012)

² Peace Valley OSB is a joint venture between Canadian Forest Products Ltd. and Louisiana-Pacific Corporation. In November 2012, CANFOR announced its intention to sell its portion to Louisiana-Pacific.

In the longer term, the goal is to expand to service the reclamation needs of wind energy, hydro, oil and gas, and forestry sectors as well. Twin Sisters has established two greenhouses, an office and a warehouse facility and is focused on seed collection of native plants including shrubs, trees and grasses. Research continues to determine which native plants are best suited for specific sites. Once fully operational the company will directly employ five workers full-time. During peak operations such as seed collection, sowing and plant distribution to clients, employment will peak periodically at approximately 15 workers. This venture will create opportunity for additional First Nation business ventures in planting and on-site monitoring. (Keefer 2012, pers. comm.)

Little Prairie Community Forest. The Little Prairie Community Forest is a joint venture between the District of Chetwynd, Saulteau First Nations and West Moberly First Nations. The community forest, which is about 13,884 hectares in size, is situated between Chetwynd and Moberly Lake. The community forests agreement has a 25 year term and grants the right to harvest 20,000 cubic metres per year (MFLNRO 2011). The stated goal is to “manage a sustainable harvesting level while maintaining all known biophysical, environmental, socioeconomic, and culturally significant values throughout the Little Prairie Community Forest” (Northern Development Initiative Trust. 2011).

6.3.2.3 Saulteau First Nations Independent Contractors

There are at least 12 SFNs independent contractors providing services mainly to the forestry, oil and gas and mining industries in the Northeast. First aid, inspections, pipeline repairs, silviculture, water hauling, slashing and burning, site preparation, line cutting, pilot car and general labour services are all available.

Paul Paquette and Sons Contracting began its business in residential water and sewer services approximately 20 years ago. The company has diversified to now offer services to the alternative energy, forestry, mining, oil and gas sectors. The company operates several pieces of heavy equipment and is primarily involved in right of way clearing and grubbing (BC Achievement Foundation 2012). In 2012 employment was 12 workers, down from a historical high of 30 workers. Currently the company has capacity to take on new contract work and projects (Powell 2012, pers. comm.).

Deep Basin Energy Services is involved in cleaning, facility construction, and pipeline repairs and is based at Moberly Lake.

Golden Eagle Enterprises Ltd operates heavy equipment including two excavators, two Forestry Mulchers, and a skid steer. The company undertakes a variety of land base work including pipeline right of way clearing and seismic line clearing, and silviculture work. The company also is involved in general clean-up and provides labour

and equipment for area industrial activities. Overall the company employs between eight and ten workers on a seasonal basis. (Garbitt. 2012. pers. comm.)

Moberly Lake Water Hauling Services was founded in 2004 and is located on Highway 29 alongside of Moberly Lake. The company provides service to the Northeast BC oil and gas sector and the local coal mining industry. Its services include rig water hauling, dust suppression, fire suppression, lease preparation, road freezing, and spray bar work. (Women's Enterprise Centre 2006)

Little Prairie Contracting is located at Moberly Lake and specializes in oil and gas land clearing, seismic line clearing, road and pipeline right of way clearing and provides prep lease pads and general labor.

Razor Resources Corporation operates heavy equipment and works in the oil and gas, forestry, and mining sectors. The company is primarily involved in seismic line cutting, mulching and pilot car services. Much of the work Razor Resources undertakes is seasonal, with employment varying depending on projects and season.

Reuben Walker LTD. was started in 2006 and provides first aid and mobile treatment centres for activities in the Peace River region (Hotfrog 2012).

7 INTEREST AREA 4: COMMUNITY HEALTH

7.1 Key Issues

In this profile, health is measured according to Cultural Vitality and overall Health Conditions.

SFNs members have the right to use their traditional territory for cultural and traditional activities, as well as to meet cultural, social and economic interests. Traditional foods are an important component of SFNs diet and are intrinsic to their cultural identity. SFNs members have expressed concern that major resource developments continue to negatively impact their ability to use the land and resources on traditional territory for subsistence purposes. (Publicover 2013, pers. comm.)

Issues for Health Conditions for SFNs include public health services and safety, and how these are changing with regional population growth and the influx of outside workers who are working on major developments (Publicover 2013, pers. comm.).

Changes in the environment are increasing noise pollution, altering the landscape and increasing the risks associated with the consumption of traditional foods. An increasing number of SFNs members are leaving the community to work on major projects, which creates negative social effects and health conditions.

7.2 Key Indicators

Key indicators for Cultural Vitality and Health Conditions are presented in Table 7-1 along with the rationale and key data sources.

Table 7-1: Key Indicators for Cultural Vitality and Health Conditions

Key Indicators	Rationale For Selection	Baseline Data Source
Cultural Vitality: <ul style="list-style-type: none"> - Cultural and spiritual use of traditional territory - Importance of traditional resources and lands - Fluency of Cree language 	Change to the traditional lands and resources would affect cultural vitality	SFNs Needs Assessment report Muskoti Learning Centre Language report
Health Conditions: <ul style="list-style-type: none"> - Physical and social health conditions - Health risk issues - Individual's access to health services 	Changes to the land and social structure of the area could impact existing health conditions of individuals. Change to health care access may affect the health of individual SFNs members	SFNs Needs Assessment report SFNs community survey

7.3 Cultural Vitality

7.3.1 Culture

The Saulteau name originates from the French term “saulteurs,” referring to “people of the rapids” (Asikinack in Finavera Wind Energy 2011). The Saulteau First Nations membership originated in Manitoba. Between 1888-1908, the Saulteau people arrived at Moberly Lake, where they settled and intermarried with the Nēhiyawēwin (Cree) and Dunne-za (Beaver) who were already living in the area (First People’s Language Map of BC 2012, Government of British Columbia, Saulteau First Nations, West Moberly First Nations 2006, Napoleon 2005).

In 2002, a survey of 84 SFNs members indicated that 29% of respondents had traditional knowledge. age was an important factor 79% of elders said they had traditional knowledge, while only 16% of all remaining respondents said that they had traditional knowledge. Of the respondents who did not have traditional knowledge, approximately 60% wanted to take language classes while 40% were interested in classes on their culture. (SFNs 2002)Language

SFNs peoples originally comprised Anishnaubemowin (Saulteau) and Nēhiyawēwin (Cree) speakers. Members of the Saulteau First Nations speak Dunne-za,

Anishnaubemowin (Saulteau), and Nēhiyawēwin (Cree) (Muskoti Learning Centre 2012b).

The Muskoti Learning Centre has compiled statistics for community language fluency on-reserve only. In 2010, there were 68 residents on the Moberly Lake reserve that spoke and understood Cree fluently. Of this number, 43 were over the age of 55 years, with 11 people between the age of 25 and 44 and an additional 14 people between the ages of 45 and 54 years. A further 44 people could somewhat understand or speak Cree with over half of these over the age of 55 years of age. (Muskoti Learning Centre 2012b)

There is no cultural curriculum, although elders participate in cultural training as much as possible. The community did have a program that was focused on traditional life; however, this is not currently in place as these courses are typically proposal driven and funding is not always available.

7.4 Health Conditions

The question of physical and mental health was posed to Band members in 2002 with 58 responding. Of the total respondents, 41% self-identified themselves as being healthy, while 39% identified that they were unhealthy, and the remainder mentioned their health was improving. (SFNs 2002)

In the 2012 SFNs Community Survey the focus was on access to health services and health care professionals. As illustrated in

Table 7-2, of the 240 respondents, most had their own family doctor while a majority did not have their own dentist.

Table 7-2: Saulteau FNs survey participants Access to Health Professionals, 2012

Survey Question	Response		
	Yes	No	NR
• Do you have a family doctor?	75%	23%	7%
• Have you seen a family doctor in the last 12 months?	72%	16%	12%
• Do you have a family dentist?	38%	57%	5%
• Have you visited a dentist in the past 12 months?	36%	42%	22%
• Have you need to see other health care professionals in the past 12 months?	41%	49%	10%

SOURCE: SAULTEAU FIRST NATIONS (2012C)

NOTE:

NR refers to no response or missing data or not applicable.

Seventy-one percent of respondents said they had seen a family doctor in the past twelve months. Of respondents who had seen a family doctor, the wait times varied, and included:³

- Less than one week - 22%;
- One to two weeks - 8%;
- Two to four weeks – 38%;
- More than four weeks – 6%; and,
- Those that did not respond to the question with a wait time 27%

Over 40% of respondents needed to visit another health professional in the last twelve months. The most common response was optometrist but included other specialists such as physiotherapist, gynecologist, and otolaryngologist.

As seen in Table 7-3, two-thirds of SFNs Community Survey respondents indicated they would be interested in accessing traditional healers if funding was available. Over half indicated that in the past twelve months that if on-reserve health and social services had been available they or their families would have used the service. There was also strong interest in accessing health professionals if they provided the service in the community. The most common response was for access to family doctors and dentists on-reserve.

Table 7-3: Saulteu FNs survey participants Interest in Access Other Health Services, 2012

Survey Question	Response			
	Yes	No	NR	
• If funding was available, would you prefer to access a traditional healer for specific health needs?	75%	14%	11%	
• In past 12 months, are there health and social services you or your family would have used if they were available in the community?	56%	32%	12%	
	No, don't live on reserve	Yes	No	NR
• In the past 12 months, are there health professionals that you or your family would have used if they provided service in the community?	5%	75%	10%	10%

SOURCE: SAULTEAU FIRST NATIONS (2012C)

NOTE:

NR refers to no response or missing data or not applicable.

³ Wait times were defined from the date they made the appointment until the date they had their visit.

A REFERENCES

A-1 Literature Cited

- Aboriginal Affairs and Northern Development Canada. 2011. *Indian Registry System, December 31, 2011*.
- Aboriginal Affairs and Northern Development Canada. 2000. *Indian Registry System, December 31, 2000*.
- Aboriginal Affairs and Northern Development Canada. 2005. *Indian Registry System, December 31, 2005*.
- Aboriginal Affairs and Northern Development Canada. 2010. *Indian Registry System, December 31, 2010*.
- BC Ministry of Education. 2011. *Student Statistics – 2011/12 for Moberly Lake Elementary*. Available at: http://www.bced.gov.bc.ca/reports/pdfs/student_stats/05959018.pdf Accessed: August 12, 2012
- BC Stats. 2012. *Saulteau First Nation Community and Area Map*.
- Brunet, Robin. 2004. *Partnering Up for Success: How a native/non-native forestry partnership brought success to all parties*. Tracks & Treads. 2004(Spring) 12-15. Available at: http://www.finning.ca/_downloads/Media_and_Publications/tnt/2004Spring.pdf. Accessed: December 2011.
- Coffee Talk Express. 2012. *Groundbreaking Partnership Opens New Twin Sisters Native Plants Nursery*. Wednesday May 16, 2012 edition. Available at: <http://www.coffeetalkexpress.com/May12/May12%2016.pdf>. Accessed: September 28, 2012.
- Government of British Columbia, Saulteau First Nation, West Moberly First Nation. 2006. *The Peace Moberly Tract Draft Sustainable Resource Management Plan*. 2006. http://archive.ilmb.gov.bc.ca/slrp/srmp/north/peace_moberly/final_draft_PMT_SRMP-July19.pdf Accessed: March 15, 2012.
- Madill, Dennis F.K. 1986. *Treaty Research Report – Treaty Eight (1899)*. Treaties and Historical Research Centre, Indian and Northern Affairs Canada.
- Napoleon, Val. 2005. *Aboriginal Self Determinations: Individual Self and Collective Selves*. <http://forms.msvu.ca/atlantis/vol/292pdf/292napol.PDF>
- Palmer & Associates Inc. 2007. *Final Report. Comprehensive Needs and Capacity Assessment of Aboriginal Housing in British Columbia*, prepared for BC Office of Housing and Construction Standards. <http://www.bchousing.org/resources/Programs/AH/Aboriginal%20Housing%20Report.pdf>. Accessed March 8, 2012.
- Peace River Regional District. 2012b. *2011 9-1-1 Statistics*. Available at: http://prrd.bc.ca/services/emergency/911_services.php Accessed: July 30, 2012
- Peace River Regional District. 2012c. *Moberly Lake Fire Protection Area Map*.

- Peace River Regional District. 2011. *Consolidated Financial Statements – Year Ended December 31, 2011*.
- Peace Valley OSB. 2006. *BC's Biggest OSB Mill Officially Opens*. News Release May 12, 2006. Available at: http://www.pvosb.com/documents/PVOSB-News-Release-Grand_Opening.pdf Accessed: September 28, 2012.
- Saulteau First Nations. 2012b. *Off-reserve and On-reserve Population Based on Membership Code*. Data as of October 10, 2012.
- Saulteau First Nations. 2012c. *2012 Saulteau First Nations Community Survey*.
- Saulteau First Nations. 2012e. *Saulteau First Nations Educational Programming Support for Band Members – 2001 to 2011*. Data as of June 6, 2012.
- Saulteau First Nations. 2002. *Saulteau First Nations Welfare Reform Project Final Report: A Community Needs Assessment Survey and Community Plan to Address Community Members Needs*.
- Statistics Canada. 2007. *East Moberly Lake 169, British Columbia (Code5955801) (table). 2006 Community Profiles*. 2006 Census. Statistics Canada Catalogue no. 92-591-XWE. Ottawa. Released March 13, 2007. <http://www12.statcan.ca/census-recensement/2006/dp-pd/prof/92-591/index.cfm?Lang=E> Accessed: March 15, 2012.
- Statistics Canada. 2012. *Census Profile. 2011 Census*. Statistics Canada Catalogue no. 98-316-XWE. Ottawa. Released June 27 2012. Available at: <http://www12.statcan.gc.ca/census-recensement/2011/dp-pd/prof/index.cfm?Lang=E>. Accessed: August 2012.
- University of Northern British Columbia (UNBC), Université de Montréal, Assembly of First Nations. 2011. *First Nations Food, Nutrition and Environment Study (FNFNES) Results from Saulteau, British Columbia*. Final Community Report “Healthy Environment and Healthy Foods for Healthy First Nations”.
- Women’s Enterprise Centre. 2006. *Start and Grow Your Business - Northern Women’s Symposium*, Fort St. John March 30, 2006. Available at: http://www.womensenterprise.ca/enews/articles/Fort_St_John_Women.pdf Accessed: October 17, 2012.

A-2 Internet Sites

Aboriginal Affairs and Northern Development Canada. 2013. *Treaty Guide to Treaty No. 8 (1899)*. Available at: <http://www.aadnc-aandc.gc.ca/eng/1100100028805/1100100028807>. Accessed January 15, 2013.

BC Achievement Foundation. 2012. *Citation for BC Aboriginal Business Awards Achiever – Paul Paquette and Sons Contracting*. Available at: <http://www.bcachievement.com/aboriginalbusiness/recipient.php?id=14>. Accessed: October 16, 2012.

BC Ministry of Public Safety and Solicitor General, Police Services Division. 2012. *Regional Profile 2010: Peace River Region: Regional Policing*. Online: <http://www.pssg.gov.bc.ca/policeservices/statistics/index.htm> Accessed: September 27, 2012.

British Columbia HealthLinkBC. 2012. Available at: <http://find.healthlinkbc.ca/search.aspx?d=RG002579> Accessed: July 19, 2012.

BC Ministry of Forests, Lands and Natural Resource Operations. 2011. Chetwynd and First Nations to manage local forests. News Release 2011FOR0217-001569 (December 5, 2011). Available at: http://www2.news.gov.bc.ca/news_releases_2009-2013/2011FOR0217-001569.htm. Accessed: September 25, 2012.

BC Stats. 2012. Population Age and Sex – Peace River Regional District and British Columbia. Available at: <http://www.bcstats.gov.bc.ca/StatisticsBySubject/Demography/PopulationEstimates.aspx>. Accessed: October 12, 2012.

College of Dental Surgeons of British Columbia. *Directory of Dentists*. 2011. Available at: <https://eservice.cdsbc.org/directory/Default.aspx>. Accessed: September 14, 2011.

College of Physicians and Surgeons in British Columbia. 2011. *Physician Directory*. Online <https://www.cpsbc.ca/node/263> Accessed: September 21, 2011.

First People's Language Map of British Columbia. 2012. *Language*. Available at: <http://maps.fphlcc.ca/> Accessed: September 25, 2012.

Hotfrog. 2012. *About Reuben Walker Ltd*. Available at: <http://www.hotfrog.ca/Companies/REUBEN-WALKER-LTD-FIRST-AID>. Accessed: October 16, 2012

Industry Canada. 2012. *Company Directory Industrial Sector – Four Evergreen Resources*. Available at: <http://www.ic.gc.ca/app/ccc/srch/nvgt.do?lang=eng&prt=1&sbPrtl=&estblmntNo=234567104466&profile=cmlptPrfl&profileId=501&app=sold>. Accessed: September 27, 2012.

Muskoti Learning Centre. 2012a. *Muskoti Learning Centre – Saulneau First Nation*. Available at: <http://www.saulneau.com/Muskoti/index.html> Accessed: August 13, 2012.

Muskoti Learning Centre. 2012b. *Language Needs Assessment: Saulneau First Nations' Muskoti Learning Centre*. Available at: <http://maps.fphlcc.ca/node/2256> Accessed: August 13, 2012.

- Northern Development Initiative Trust. Nov. 14, 2011. *Northeast Region Project Investments*. Available at: <http://northerndevelopment.bc.ca/news/103/18/Northern-Entrepreneurs-Praise-First-Innovation-Bootcamps>. Accessed: July 19, 2012.
- Peace River Regional District. 2012a. *Fire Protection*. Available at: http://prrd.bc.ca/services/emergency/fire_protection.php Accessed: July 30, 2012.
- Saulteau First Nations. 2012a. *Chief's Message*. Available at: <http://www.saulteau.com/chiefandcouncil.html>. Accessed: December 2011.
- Saulteau First Nations. 2012d. *Health*. Available at: <http://www.saulteau.com/health.html>. Accessed: December 2011.
- Saulteau First Nations. 2012f. *Saulteau First Nations Land Development*. Available at: <http://www.saulteau.com/lands.html>. Accessed: July 2012.
- Saulteau First Nations. 2011. *Muskoti Learning Centre*. Available at: <http://www.saulteau.com/Muskoti/index.html>. Accessed: December 2011.
- Saulteau First Nations. 2009. *Saulteau First Nation News Letter – November 2009*. Available at: <http://www.saulteau.com/newsletters.html> Accessed: July 19, 2012.
- Tembec. 2013. *Tembec to Idle its high-yield pulp mill in Chetwynd in September*. Available at: <http://tembec.com/en/Media/Press-Releases/tembec-idle-its-high-yield-pulp-mill-chetwynd-british-columbia-september>. Accessed: January 15, 2013.

A-3 Contacts

- Aird, Tom. 2012. Manager, Three Nations Ventures. Telephone conversation with Peak Solutions Consulting Inc. November 13, 2012.
- Davis, Harley, 2012. Chief, Saulteau First Nations. In-person interview with Peak Solutions Consulting Inc. May 23, 2012
- Davis, Ingrid, 2012. Director of Administration and Finance, Saulteau First Nations. In-person interview with Peak Solutions Consulting Inc. on May 18, 2012.
- Garbitt, Lana. Golden Eagle Enterprises Ltd. Telephone conversation with Peak Solutions Consulting Inc. on November 17, 2012.
- Glover, Keith. 2012. Saulteau First Nations Public Works Manager. Telephone conversation with Peak Solutions Consulting Inc. on August 14, 2012 and February 4, 2013.
- Hendley, William. 2012. Chetwynd Unit Chief, BC Ambulance. Telephone conversation with Peak Solutions Consulting Inc. on September 27, 2012.
- Henry, Rob. 2012. Former Fire Chief of Moberly Lake Fire Department. Telephone interview with Peak Solutions Consulting Inc. on August 31, 2012.
- Keefer, Michael. 2012. Principal. Keefer Ecological Ltd. Telephone conversation with Peak Solutions Consulting Inc. on October 10, 2012.
- Leahy, Darrel. 2012. Manager. Six Nations Ventures. Telephone conversation with Peak Solutions Consulting Inc. on September 28, 2012.

- Maurice, Cheryl. 2012. Acting Director, Saulneau First Nations Health and Family Services. In-person interview with Peak Solutions Consulting Inc. on May 17, 2012.
- McCartney, Rodney. 2012. Superintendent, Fort St. John, BC Ambulance. Telephone conversation with Peak Solutions Consulting Inc. on February 10, 2012.
- Norris, Audrey. 2012. Director of Education, Muskoti Learning Centre. In-person interview with Peak Solutions Consulting Inc. on May 18, 2012, follow-up emails.
- Owens, Naomi, 2012. Biologist, Lands Department, Saulneau First Nations. In-person interview with Peak Solutions Consulting Inc. on May 18, 2012.
- Paquette, Henry. 2012. President, 4 Evergreen Resource LP. Telephone conversation with Peak Solutions Consulting Inc. on September 27, 2012. Powell, Todd. 2012. Paul Paquette and Sons Contracting. Telephone conversation with Peak Solutions Consulting Inc. on October 4, 2012.
- Publicover, Rick, 2013. Lands Manager, Saulneau First Nations. Several in-person and telephone conversations with Peak Solutions Consulting Inc. between May 2012 and January 2013.
- Powell, Todd. Paul Paquette and Sons Contracting. Telephone conversation with Peak Solutions Consulting Inc. on October 4, 2012.
- Totusek, Colleen. 2012. Acting Director of Health. Saulneau First Nation. In-person interview with Peak Solutions Consulting Inc. May 23, 2012, telephone conversation on September 26, 2012.
- Tremblay, Olivia. 2012. Detachment Commander, RCMP. Telephone conversation with Peak Solutions Consulting Inc. on September 27, 2012.
- White, LeRoy. 2012. Chief Administrative Officer. Saulneau First Nation. In-person interview with Peak Solutions Consulting Inc. on May 19, 2012.
- Work, Natalie. Population GIS Analyst, BC Stats. Telephone conversation with Peak Solutions Consulting Inc. on September 29, 2012.