

**EAGLE MOUNTAIN - WOODFIBRE GAS
PIPELINE PROJECT**

SCHEDULE A

**CERTIFIED PROJECT DESCRIPTION
FOR
AN ENVIRONMENTAL ASSESSMENT CERTIFICATE**

Table of Contents

1	PROJECT OVERVIEW	1
2	PIPELINEs.....	1
3	COMPRESSOR STATIONS	2
4	ELECTRICAL SUBSTATIONS AND TRANSMISSION LINES	2
5	TEMPORARY CONSTRUCTION FACILITIES	3

List of Appendices

APPENDIX A	CERTIFIED PROJECT DESCRIPTION MAPBOOK
------------	---------------------------------------

1 PROJECT OVERVIEW

The Eagle Mountain-Woodfibre Gas Pipeline Project (Project) is a natural gas transmission system with associated components, extending from near Hixon Creek, BC (E 513023, N 5485214) to Woodfibre, BC (E 481978, N 5502029) (Mapsheets 1 to 9).

The Project is comprised of the following components:

- Sweet natural gas¹ pipelines and associated components;
- Compressor stations and associated components;
- Electric substations and transmission lines; and
- Temporary construction facilities, including a construction camp site.

Except for temporary and permanent access roads, or unless otherwise noted, all components associated with the Project must be located within the Certified Pipeline Corridor, Certified Compressor Station Area and Certified Electrical Transmission Line Corridor shown on Mapsheets 1 to 9 in Appendix A to this document.

2 PIPELINES

The pipelines must transport sweet natural gas only.

The pipeline has a maximum Nominal Pipe Size (NPS) diameter of 24 inches (610 mm Outside Diameter [OD]).

The suction and discharge pipeline laterals to the Mount Mulligan compressor station have a maximum NPS diameter of 10 inches (273 mm OD).

The relocation of a portion of the existing NPS 10 pipeline to the NPS 24 Certified Pipeline Corridor and abandonment or decommissioning of a portion of the existing NPS 10.

The pipeline and associated components, including the construction right of way, must be located within the Certified Pipeline Corridor on Mapsheets 1 to 9 (Appendix A), with the exception of permanent access roads and barge landing sites.

¹ Sweet natural gas refers to natural gas that meets natural gas transmission pipeline quality specifications, containing either zero or trace amounts of hydrogen sulphide, carbon dioxide, or natural gas liquids (as defined in CSA Z662).

Associated components related to construction and operation of the pipelines are:

- Supervisory control and data acquisition system, and associated communication equipment and towers, to allow for safe operation and maintenance of the pipeline through remote control and monitoring of operational and measurement data;
- In-line inspection facilities, including valves, pig launchers and receivers;
- Mainline block valves;
- Cathodic protection;
- One custody transfer station;
- Pipeline markers;
- Ground bed anodes;
- Crossover valves and piping;
- Permanent access roads;
- Portals, including fencing or structure; and
- Other ancillary components.

3 COMPRESSOR STATIONS

The Project includes:

- Up to two electric motor driven (EMD) compressor units at Eagle Mountain;
- Up to three gas fired turbine compressor units at Mount Mulligan compressor station; and
- A permanent access road to the Mount Mulligan compressor station.

The compressor stations are located within the Certified Compressor Station Areas shown in Mapsheets 5, 6 and 8 and are described in Table 1.

Table 1: Compressor station compressor configuration.

Cleared Area for Compressor Station (maximum ha)	Compressor Configuration
Eagle Mountain expansion (5 ha)	Up to two 20,500 HP EMD tandem compressor units.
Mount Mulligan (4 ha)	Up to three 4,700 HP natural gas-fired turbine compressor units.

4 ELECTRICAL SUBSTATIONS AND TRANSMISSION LINES

The Project includes up to one electrical substation and high voltage electrical transmission lines to support the Eagle Mountain compressor station in Coquitlam.

The location of the electrical substation and transmission lines are within the Certified Electrical Transmission Line Corridor on Mapsheet 8 (Appendix A).

Facilities related to construction and operation of the electrical substation and transmission line at the Eagle Mountain compressor station are:

- Up to one high voltage transmission line (230 kV) to connect the new FortisBC electrical substation to the existing BC Hydro Meridian substation;
- One high voltage step-down electrical substation; and
- Up to two overhead electrical transmission lines (25 kV), from the FortisBC substation adjacent to the existing BC Hydro Meridian substation, to the proposed expansion of the existing Eagle Mountain compressor station.

5 TEMPORARY CONSTRUCTION FACILITIES

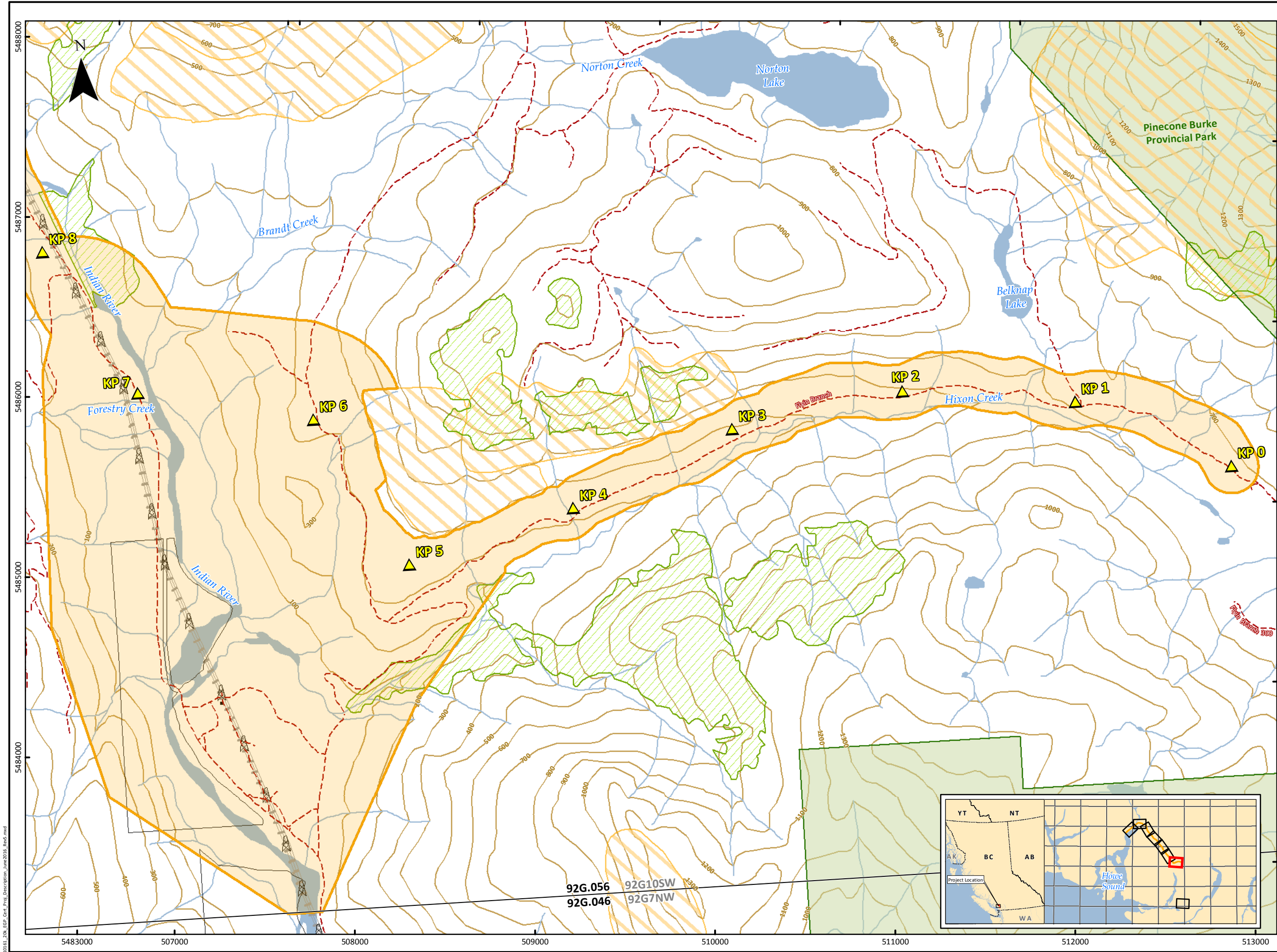
The Project includes temporary components and activities during Construction.

The location of temporary components and activities may be anywhere within or outside the Certified Pipeline Corridor.

Associated temporary components and activities are:

- Staging and stockpile sites;
- Contractor storage yards to store equipment and supplies;
- Laydown areas to setup and teardown equipment;
- Use of or upgrades to existing rail sidings;
- Work area for trenchless crossing construction;
- Borrow sites;
- Use of existing barge landing sites;
- Temporary access roads;
- Construction camp to a maximum area of 2 ha;
- Communication towers; and
- Other ancillary components and activities.

APPENDIX “A”: CERTIFIED PROJECT DESCRIPTION MAPBOOK



June 2016

MAPSHEET 1 OF 9

CERTIFIED
PIPELINE CORRIDOR

EAGLE MOUNTAIN-WOODFIBRE
GAS PIPELINE PROJECT

Kilometre Post

Certified Pipeline Corridor

Certified Compressor Station Area

Certified Electrical Transmission Line Corridor

Existing NPS10 to be Abandoned or Decommissioned

Highway

Road

Resource Road

Railway

Elevation Contour (100 m)

Watercourse

Waterbody

Wetland

Transmission Tower

Transmission Line

Building

Builtup Area

Private Parcel

Agricultural Land Reserve

Wildlife Habitat Area

Old Growth Management Area (Legal)

Ungulate Winter Range

Municipality

Regional District

Wildlife Management Area (WMA)

Park/Protected Area

First Nations Reserve

82G.010 BCGS Grid ID

0A1SE NTS Grid ID

SCALE: 1:20,000

0200400600800

metres

(All Locations Approximate)

CH2M HILL Project Number 665837

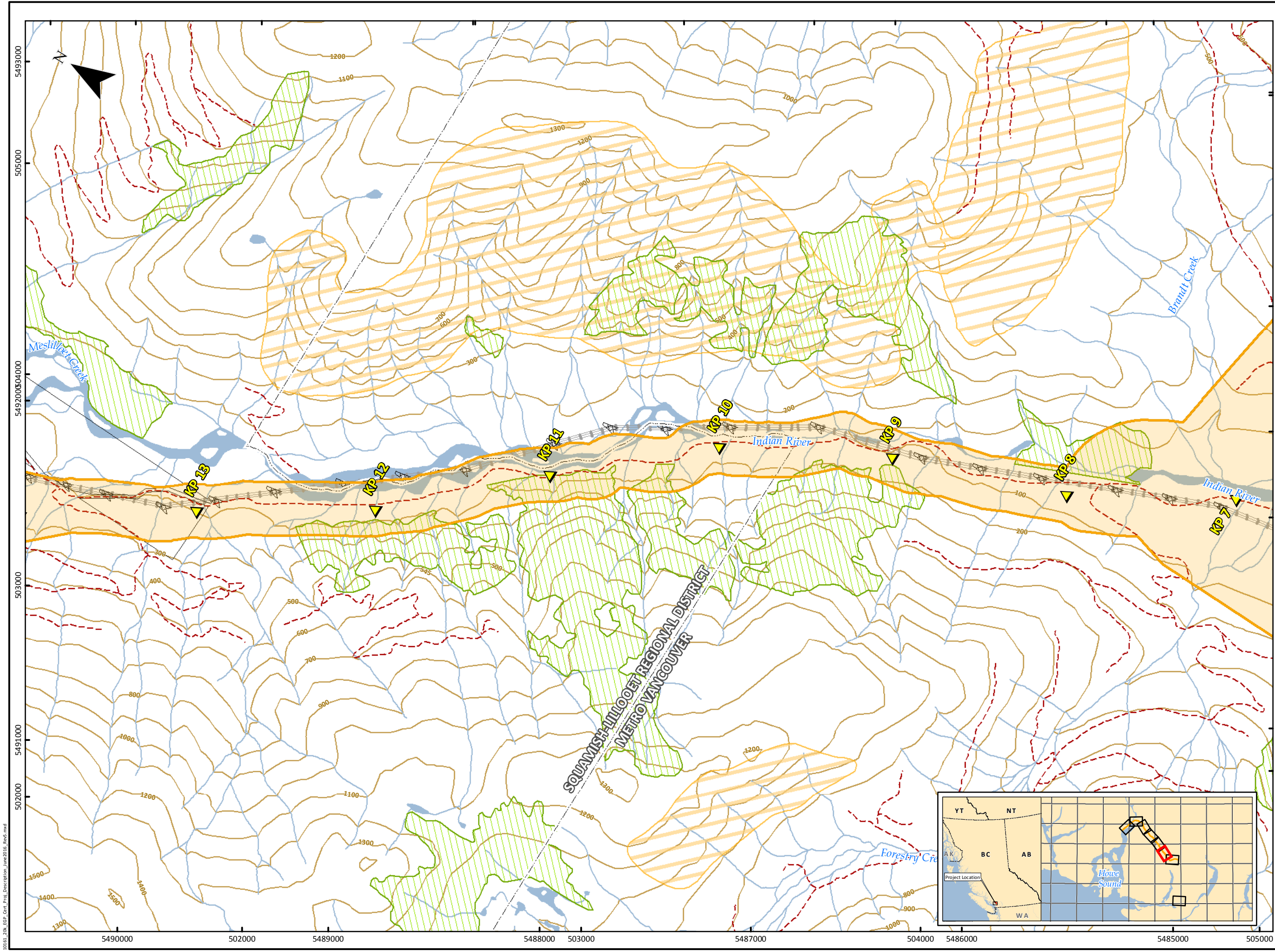
UTM Zone 10 North, NAD 1983.

KPs: Universal Pegasus International (UPI) 08-21-2014 (1017); Certified Corridor for Proposed Pipeline: CH2M 11-09-2015 (Revision 14); Mount Mulligan Certified Compressor Station Area: CH2M 08-04-2015; Mount Mulligan Compressor Footprint: FortisBC 08-04-2015; Eagle Mountain Certified Compressor Station: Solaris Management Consultants Inc. 05-11-2015; Certified Electrical Transmission Line Corridor: CH2M 05-19-2015; V1 Transmission: DBS Energy Inc 06-04-2014; Existing Transmission Lines: BC Hydro 03-24-2014; Existing Pipeline: FortisBC 2012; Roads: IHS Inc. 2016; BC MFLNRO 2012; Hydrography: BC MFLNRO 2008; Municipalities: BC MFLNRO 2007; Parks, Wildlife Management Areas: BC MFLNRO 2008; Wildlife Habitat Areas, Ungulate Winter Range: BC MOE 2005; Old Growth Management Areas: BC FLNRO 2009; First Nations Reserves: Government of Canada 2016; Agricultural Land Reserves: Agricultural Land Commission 2015; National Topographic System (NTS) Grid 1:20k: TERA Environmental Consultants 2009; British Columbia Geographic System (BCGS) Grid 1:20k: BC MFLNRO 2003; Private Parcels: Integrated Cadastral Information Society (ICIS) 03-26-2014; Railways, Base Mapping: Government of British Columbia TRIM 2005-2007.

Although there is no reason to believe that there are any errors associated with the data used to generate this product or in the product itself, users of these data are advised that errors in the data may be present.

Mapped By: JRO

Checked By: DJN



June 2016

MAPSHEET 2 OF 9

CERTIFIED
PIPELINE CORRIDOR

EAGLE MOUNTAIN-WOODFIBRE
GAS PIPELINE PROJECT

Kilometre Post

Certified Pipeline Corridor

Certified Compressor Station Area

Certified Electrical Transmission Line Corridor

Existing NPS10 to be Abandoned or Decommissioned

Highway

Road

Resource Road

Railway

Elevation Contour (100 m)

Watercourse

Waterbody

Wetland

Transmission Tower

Transmission Line

Building

Builtup Area

Private Parcel

Agricultural Land Reserve

Wildlife Habitat Area

Old Growth Management Area (Legal)

Ungulate Winter Range

Municipality

Regional District

Wildlife Management Area (WMA)

Park/Protected Area

First Nations Reserve

82G.010 BCGS Grid ID

0A1SE NTS Grid ID

SCALE: 1:20,000

0200400600800

metres

(All Locations Approximate)

CH2M HILL Project Number 665837

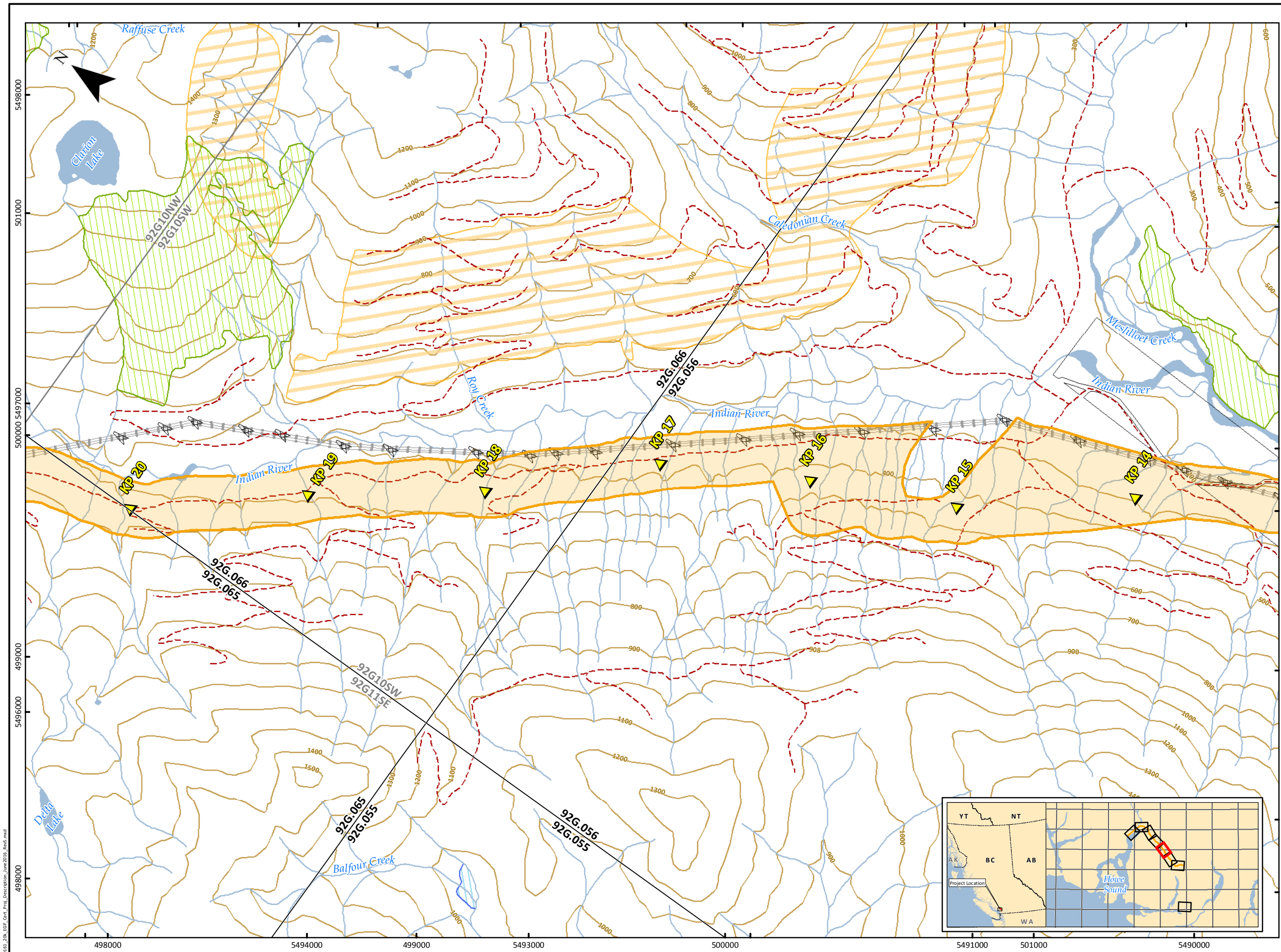
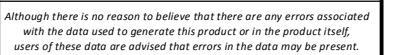
UTM Zone 10 North, NAD 1983.

KPs: Universal Pegasus International (UPI) 08-21-2014 (1017); Certified Corridor for Proposed Pipeline: CH2M 11-09-2015 (Revision 14); Mount Mulligan Certified Compressor Station Area: CH2M 08-04-2015; Mount Mulligan Compressor Footprint: FortisBC 08-04-2015; Eagle Mountain Certified Compressor Station: Solaris Management Consultants Inc. 05-11-2015; Certified Electrical Transmission Line Corridor: CH2M 05-19-2015; V1 Transmission: DBS Energy Inc 06-04-2014; Existing Transmission Lines: BC Hydro 03-24-2014; Existing Pipeline: FortisBC 2012; Roads: IHS Inc. 2016; BC MFLNRO 2012; Hydrography: BC MFLNRO 2008; Municipalities: BC MFLNRO 2007; Parks, Wildlife Management Areas: BC MFLNRO 2008; Wildlife Habitat Areas, Ungulate Winter Range: BC MOE 2005; Old Growth Management Areas: BC FLNRO 2009; First Nations Reserves: Government of Canada 2016; Agricultural Land Reserves: Agricultural Land Commission 2015; National Topographic System (NTS) Grid 1:20k: TERA Environmental Consultants 2009; British Columbia Geographic System (BCGS) Grid 1:20k: BC MFLNRO 2003; Private Parcels: Integrated Cadastral Information Society (ICIS) 03-26-2014; Railways, Base Mapping: Government of British Columbia TRIM 2005-2007.

Although there is no reason to believe that there are any errors associated with the data used to generate this product or in the product itself, users of these data are advised that errors in the data may be present.

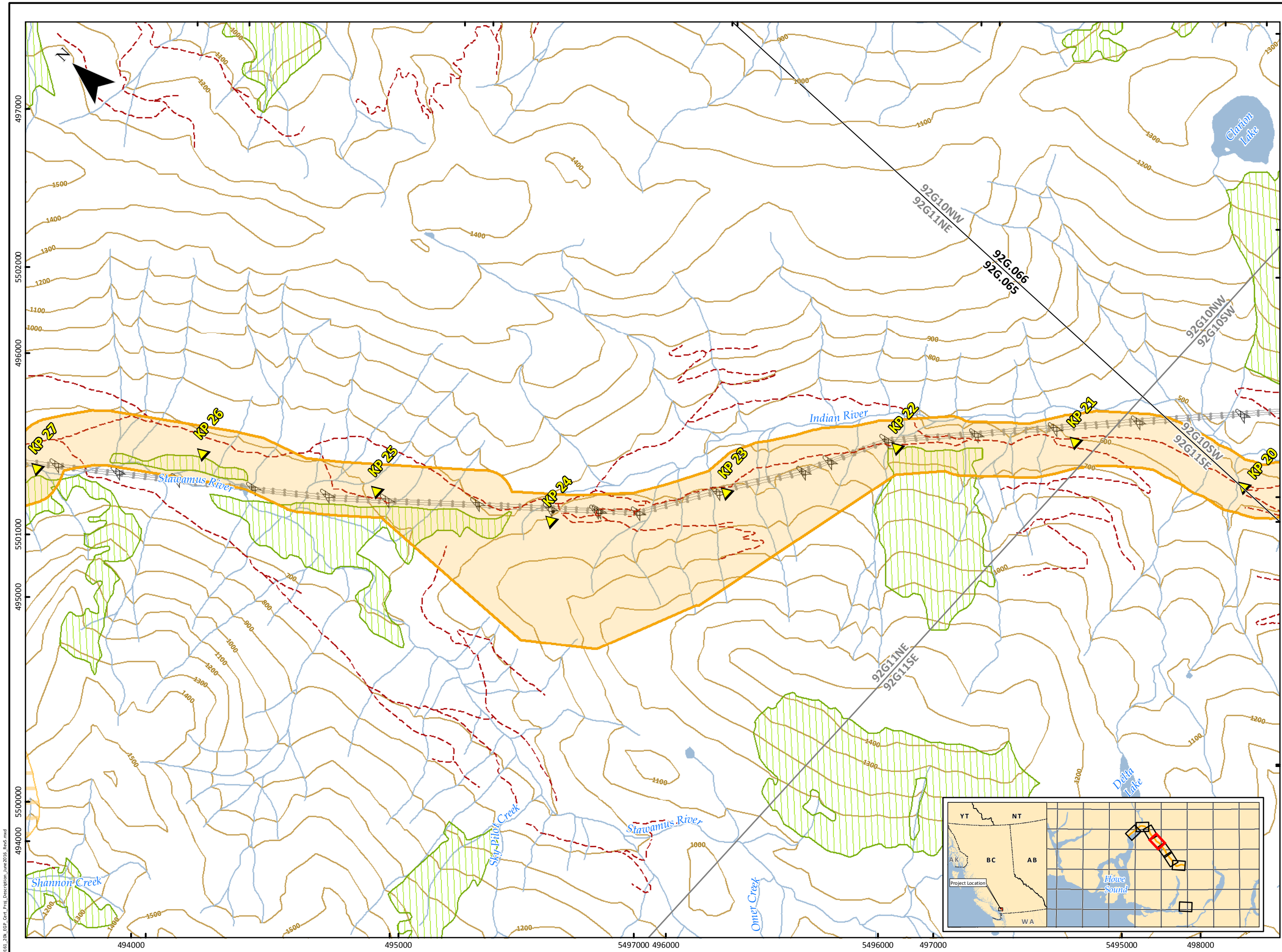
Mapped By: JRO

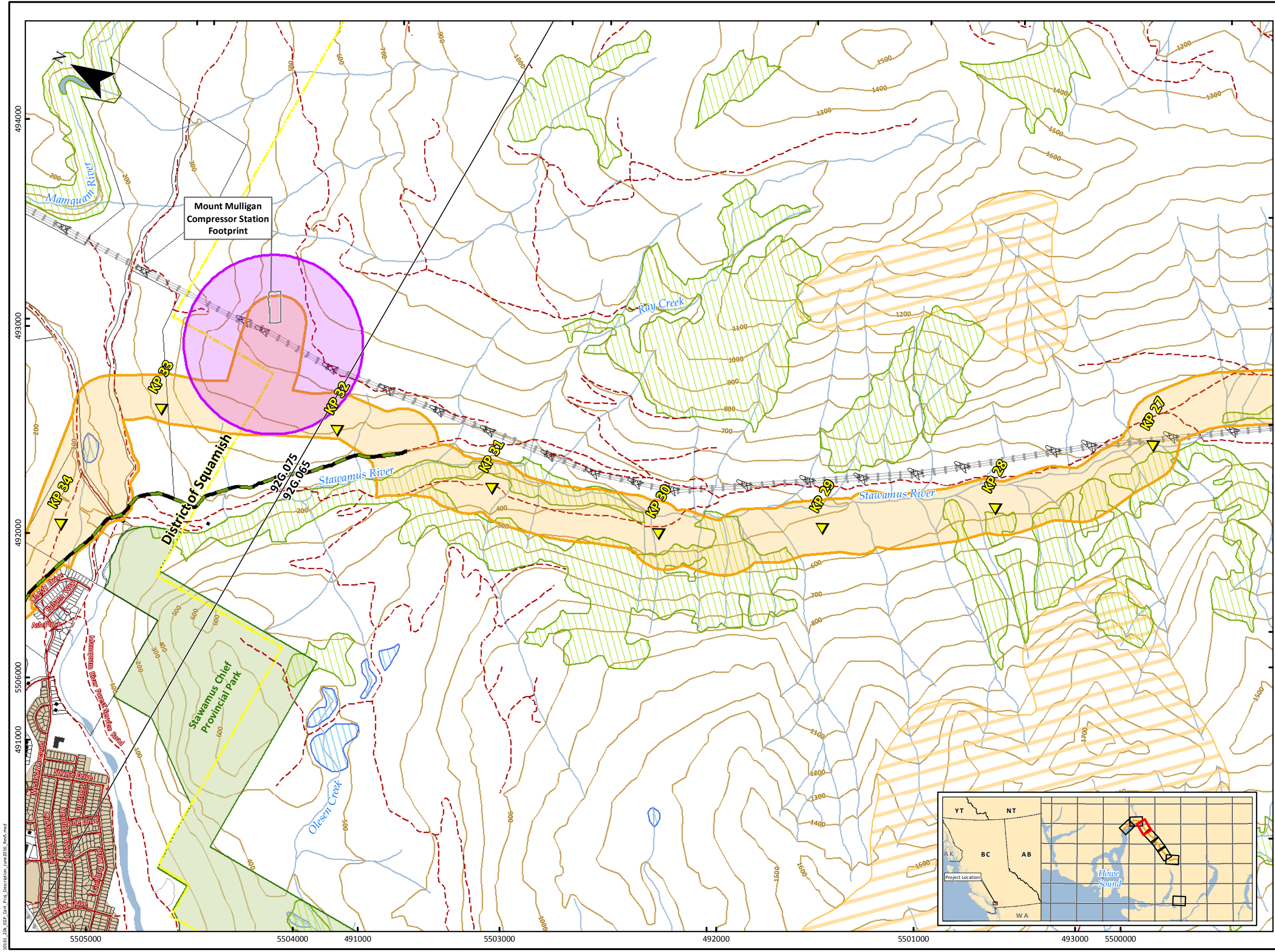
Checked By: DJN



- Although there is no reason to believe that there are any errors associated with the data used to generate this product or in the product itself, users of these data are advised that errors in the data may be present.*

Checked By: DJN





June 2016

MAPSHEET 5 OF 9

CERTIFIED
PIPELINE CORRIDOR

EAGLE MOUNTAIN-WOODFIBRE
GAS PIPELINE PROJECT

Kilometre Post

Certified Pipeline Corridor

Certified Compressor Station Area

Certified Electrical Transmission Line Corridor

Existing NPS10 to be Abandoned or Decommissioned

Highway

Road

Resource Road

Railway

Elevation Contour (100 m)

Watercourse

Waterbody

Wetland

Transmission Tower

Transmission Line

Building

Builtup Area

Private Parcel

Agricultural Land Reserve

Wildlife Habitat Area

Old Growth Management Area (Legal)

Ungulate Winter Range

Municipality

Regional District

Wildlife Management Area (WMA)

Park/Protected Area

First Nations Reserve

82G.010 BCGS Grid ID

0A1SE NTS Grid ID

SCALE: 1:20,000

0200400600800

metres

(All Locations Approximate)

CH2M HILL Project Number 665837

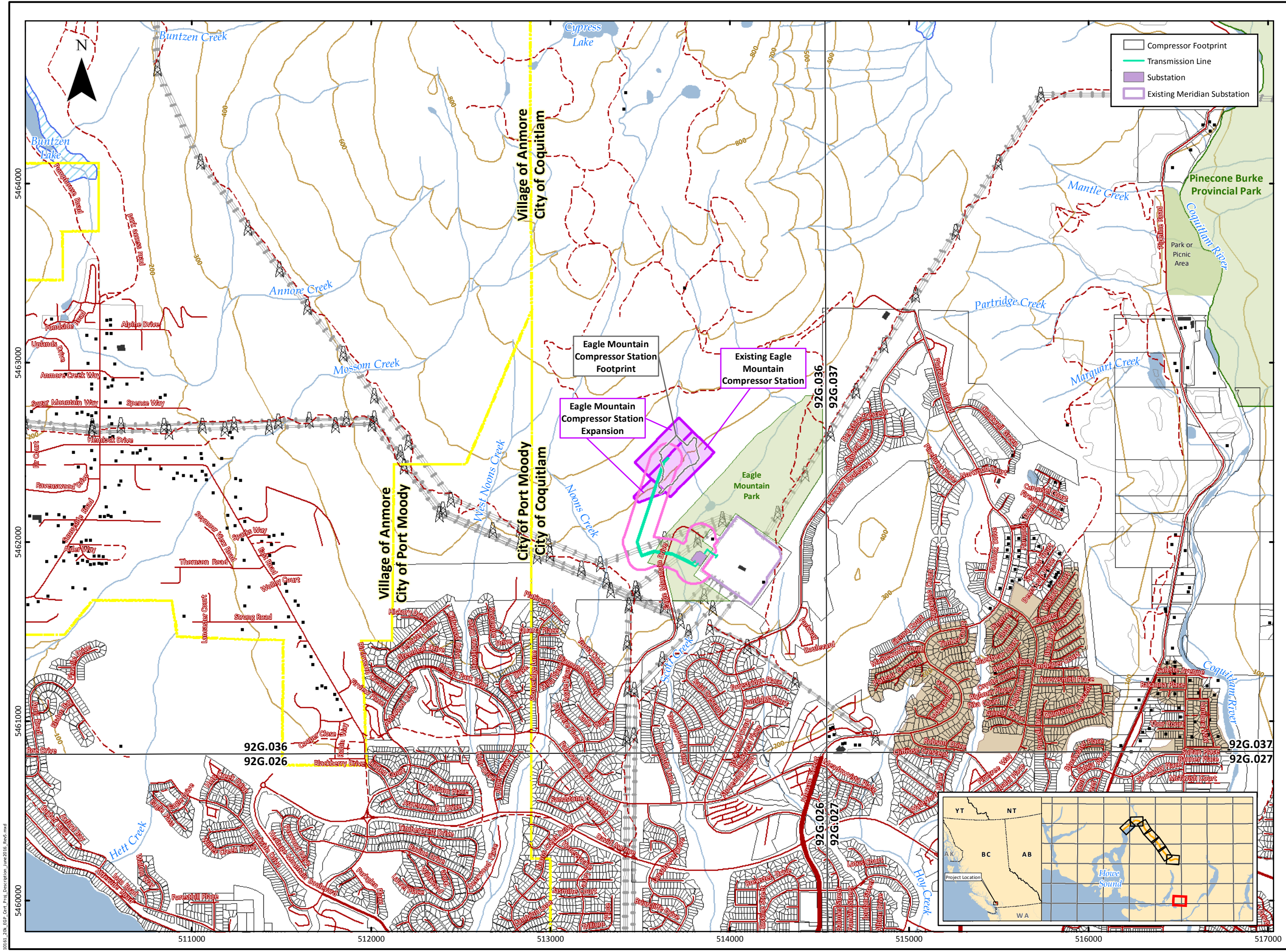
UTM Zone 10 North, NAD 1983.

KPs: Universal Pegasus International (UPI) 08-21-2014 (1017); Certified Corridor for Proposed Pipeline: CH2M 11-09-2015 (Revision 14); Mount Mulligan Certified Compressor Station Area: CH2M 08-04-2015; Mount Mulligan Compressor Footprint: FortisBC 08-04-2015; Eagle Mountain Certified Compressor Station: Solaris Management Consultants Inc. 05-11-2015; Certified Electrical Transmission Line Corridor: CH2M 05-19-2015; V1 Transmission: DBS Energy Inc 06-04-2014; Existing Transmission Lines: BC Hydro 03-24-2014; Existing Pipeline: FortisBC 2012; Roads: IHS Inc. 2016; BC MFLNRO 2012; Hydrography: BC MFLNRO 2008; Municipalities: BC MFLNRO 2007; Parks, Wildlife Management Areas: BC MFLNRO 2008; Wildlife Habitat Areas, Ungulate Winter Range: BC MOE 2005; Old Growth Management Areas: BC FLNRO 2009; First Nations Reserves: Government of Canada 2016; Agricultural Land Reserves: Agricultural Land Commission 2015; National Topographic System (NTS) Grid 1:20k: TERA Environmental Consultants 2009; British Columbia Geographic System (BCGS) Grid 1:20k: BC MFLNRO 2003; Private Parcels: Integrated Cadastral Information Society (ICIS) 03-26-2014; Railways, Base Mapping: Government of British Columbia TRIM 2005-2007.

Although there is no reason to believe that there are any errors associated with the data used to generate this product or in the product itself, users of these data are advised that errors in the data may be present.

Mapped By: JRO

Checked By: DJN



June 2016

MAPSHEET 8 OF 9

CERTIFIED
PIPELINE CORRIDOR

EAGLE MOUNTAIN-WOODFIBRE
GAS PIPELINE PROJECT

Compressor Footprint

Transmission Line

Substation

Existing Meridian Substation

Kilometre Post

Certified Pipeline Corridor

Certified Compressor Station Area

Certified Electrical Transmission Line Corridor

Existing NPS10 to be Abandoned or Decommissioned

Highway

Road

Resource Road

Railway

Elevation Contour (100 m)

Watercourse

Waterbody

Wetland

Transmission Tower

Transmission Line

Building

Builtup Area

Private Parcel

Agricultural Land Reserve

Wildlife Habitat Area

Old Growth Management Area (Legal)

Ungulate Winter Range

Municipality

Regional District

Wildlife Management Area (WMA)

Park/Protected Area

First Nations Reserve

82G.010 BCGS Grid ID

0A1SE NTS Grid ID

SCALE: 1:20,000

0 200 400 600 800 metres

(All Locations Approximate)

CH2M HILL Project Number 665837

UTM Zone 10 North, NAD 1983.

KPI: Universal Pegasus International (UPI) 08-21-2014 (1017); Certified Corridor for Proposed Pipeline: CH2M 11-09-2015 (Revision 14); Mount Mulligan Certified Compressor Station Area: CH2M 08-04-2015; Mount Mulligan Compressor Station: Solaris Management Consultants Inc. 05-11-2015; Certified Electrical Transmission Line Corridor: CH2M 05-19-2015; V1 Transmission: DBS Energy Inc. 06-04-2014; Existing Transmission Lines: BC Hydro 03-24-2014; Existing Pipeline: FortisBC 2012; Roads: IHS Inc. 2016; BC MFLNRO 2012; Hydrography: BC MFLNRO 2008; Municipalities: BC MFLNRO 2007; Parks, Wildlife Management Areas: BC MFLNRO 2008; Wildlife Habitat Areas, Ungulate Winter Range: BC MOE 2005; Old Growth Management Areas: BC FLNRO 2009; First Nations Reserves: Government of Canada 2016; Agricultural Land Reserves: Agricultural Land Commission 2015; National Topographic System (NTS) Grid 1:20k: TERA Environmental Consultants 2009; British Columbia Geographic System (BCGS) Grid 1:20k: BC MFLNRO 2003; Private Parcels: Integrated Cadastral Information Society (ICIS) 03-26-2014; Railways, Base Mapping: Government of British Columbia TRIM 2005-2007.

Although there is no reason to believe that there are any errors associated with the data used to generate this product or in the product itself, users of these data are advised that errors in the data may be present.

Mapped By: JRO

Checked By: DJN

